



Benham & Reeves

Legacy Building, Viaduct Gardens, SW11

£695 per week, £3,012 per month + fees

 1 Bedroom  1 Bathroom  Furnished

A modern one double bedroom apartment located on the 3rd floor of the Legacy Building.

Please [click here](#) for full detail

Property features

One bedroom apartment | Open planned living | Air cooling | Furnished | Dishwasher | EPC-B | 24 Hour Concierge | Swimming pool | Gym | Nine Elms Tube station

For more information about this property, please call our Nine Elms branch on

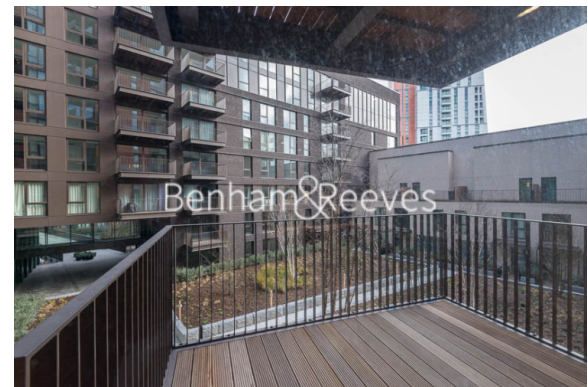
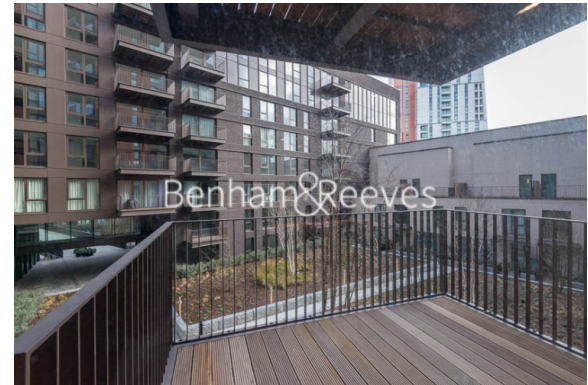
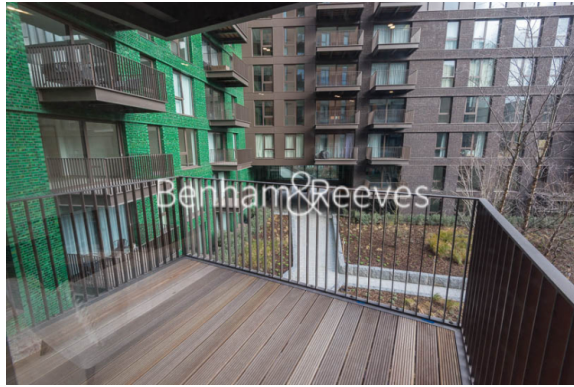
020 3282 3700

Redress & Client Money Protection :

Benham and Reeves are members of The Property Ombudsman redress scheme and have Client Money protection with ARLA Propertymark. You can find more information on our website at <https://www.benhams.com/membership/>



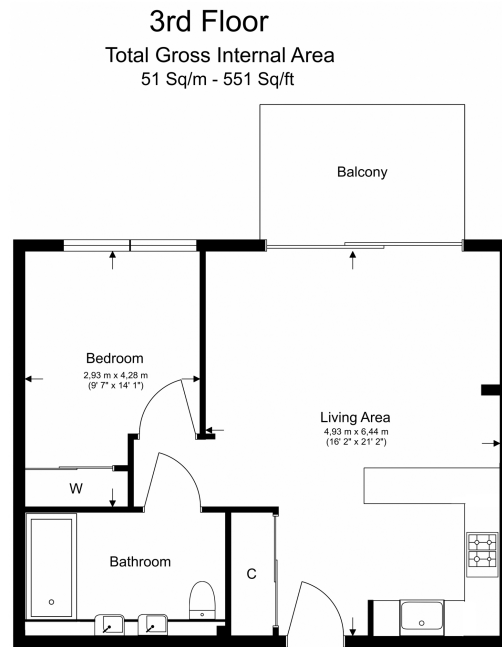
Benham & Reeves



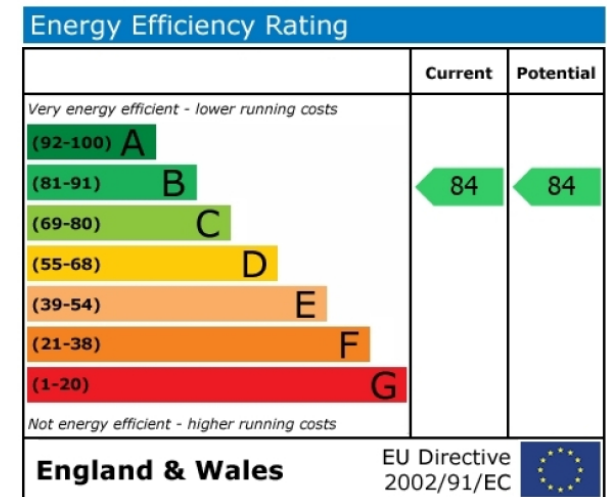
Legacy Building, Viaduct Gardens, SW11

£695 per week, £3,012 per month + fees

www.benhams.com



Floor Plan measurements are approximate and are for illustrative purposes only. While we do not doubt the floor plans accuracy, we make no guarantee, warranty or representation as to the accuracy and completeness of the floor plan.



London branches open six days a week Mon - Sat

Canary Wharf | City | Colindale | Dartmouth Park | Ealing | Fulham
Hammersmith | Hampstead | Highgate | Hyde Park | Kensington | Kew
Knightsbridge | Nine Elms | Shoreditch | Southall | Surrey Quays
Wapping | Wembley | White City | Woolwich



International offices

China | Hong Kong SAR | India | Indonesia | Israel | Malaysia | Middle East | Pakistan
Qatar | Singapore | South Africa | Thailand | Turkey

Benham & Reeves