



Benham & Reeves

## **The Hansom, Victoria SW1**

£650 per week, £2,817 per month + fees

 1 Bedroom    1 Bathroom    Furnished

A gorgeous 532 sq ft ONE-BEDROOM apartment with rich wood flooring on the 5th Floor of The HANSOM BUILDING, which is conveniently-located behind VICTORIA STATION and within a short walk of CARDINAL SQUARE, as well as an amazing variety of theatres & lifestyle amenities.

Please [click here](#) for full detail

## Property features

**1 Bedroom | 1 Bathroom | Open Plan Reception | Furnished | Fitted Kitchen | EPC-B | 532 Sq Ft | Excellent Location | Close to Transport | Nearby Victoria**

For more information about this property,  
please call our Knightsbridge branch on

**020 7581 2112**

Redress & Client Money Protection :

Benham and Reeves are members of The Property Ombudsman redress scheme and have Client Money protection with ARLA Propertymark. You can find more information on our website at <https://www.benhamandreeves.com/membership/>



Benham&Reeves

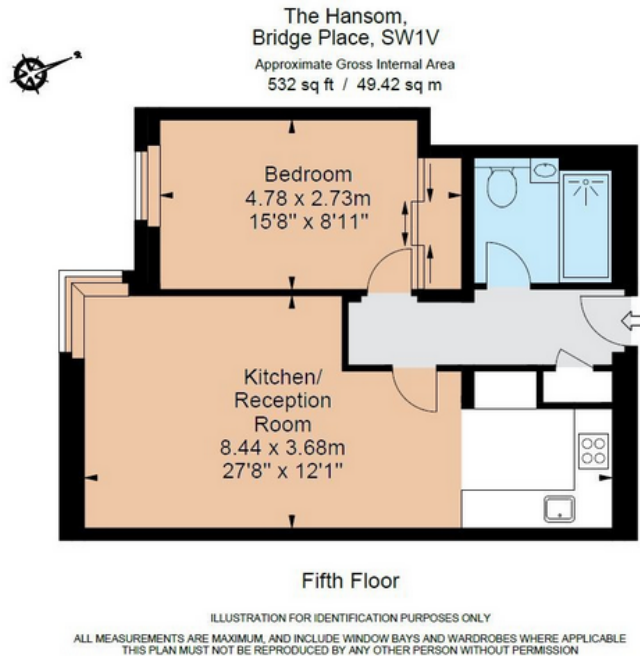




# The Hansom, Victoria SW1

£650 per week, £2,817 per month + fees

www.benhams.com



Score	Energy rating	Current	Potential
92+	A		
81-91	B	82   B	82   B
69-80	C		
55-68	D		
39-54	E		
21-38	F		
1-20	G		

## London branches open six days a week Mon - Sat

Canary Wharf | City | Colindale | Dartmouth Park | Ealing | Fulham  
Hammersmith | Hampstead | Highgate | Hyde Park | Kensington | Kew  
Knightsbridge | Nine Elms | Shoreditch | Southall | Surrey Quays  
Wapping | Wembley | White City | Woolwich

## International offices

China | Hong Kong SAR | India | Indonesia | Qatar | Malaysia | Middle East | Pakistan  
Singapore | South Africa | Thailand | Turkey

