



Benham & Reeves

The Hansom, Victoria SW1V

£695 per week, £3,012 per month + fees

 1 Bedroom  1 Bathroom  Furnished

A gorgeous 532 sq ft ONE-BEDROOM apartment on the 5th floor of The HANSOM BUILDING, which is conveniently-located behind VICTORIA STATION and a short walk of CARDINAL SQUARE, as well as an amazing variety of theatres & lifestyle amenities.

Please [click here](#) for full detail

Property features

1 Bedroom | 1 Bathroom | Open Plan Reception | Furnished | Fitted Kitchen | EPC-B | 532 Sq Ft | Excellent Location | Close to Transport | Nearby Victoria

For more information about this property,
please call our Knightsbridge branch on

020 7581 2112



Redress & Client Money Protection :
Benham and Reeves are members of The Property Ombudsman redress scheme and have Client Money protection with ARLA Propertymark.
You can find more information on our website at <https://www.benhams.com/membership/>

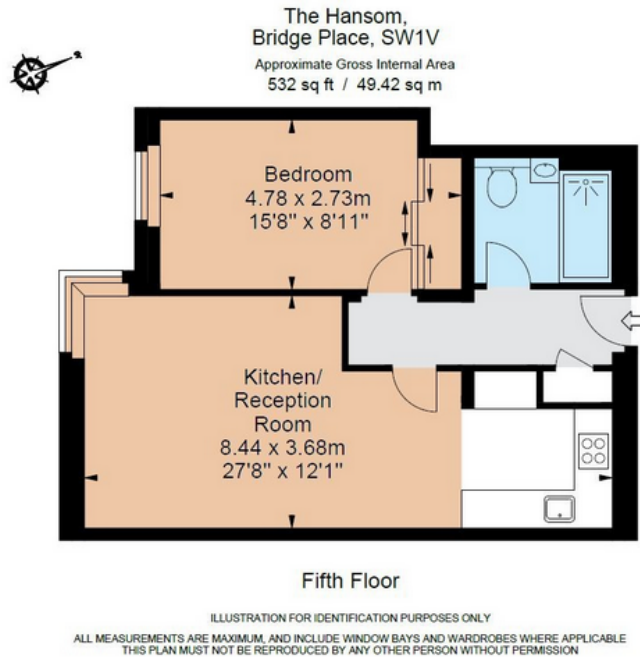
Benham & Reeves



The Hansom, Victoria SW1V

£695 per week, £3,012 per month + fees

www.benhams.com



Score	Energy rating	Current	Potential
92+	A		
81-91	B	82 B	82 B
69-80	C		
55-68	D		
39-54	E		
21-38	F		
1-20	G		

London branches open six days a week Mon - Sat

Canary Wharf | City | Colindale | Dartmouth Park | Ealing | Fulham
Hammersmith | Hampstead | Highgate | Hyde Park | Kensington | Kew
Knightsbridge | Nine Elms | Shoreditch | Southall | Surrey Quays
Wapping | Wembley | White City | Woolwich

International offices

China | Hong Kong SAR | India | Indonesia | Qatar | Malaysia | Middle East |
Singapore | South Africa | Thailand | Turkey



Benham & Reeves