



Benham & Reeves

Davies House, Vousden Grove, SE28

£577 per week, £2,500 per month + fees

 3 Bedrooms  2 Bathrooms  Furnished

Contemporary large, furnished, 4th floor apartment situated in a stunning development close to the Plumstead markets and amenities of Woolwich, with Underground parking and a short bus commute from Woolwich Tube station. EPC B

Please [click here](#) for full detail

Property features

Contemporary furnished 3 beds 2 baths flats located on the 4 | Open plan kitchen with well-known appliances | Private balcony | Private underground parking included | Ample storage with large wardrobes | EPC- B | Overall spans out 970 sqft | Wood Floor | Short Walk to Plumstead Station or Woolwich Tube station and

For more information about this property,
please call our Woolwich branch on

020 8051 0700

Redress & Client Money Protection :

Benham and Reeves are members of The Property Ombudsman redress scheme and have Client Money protection with ARLA Propertymark. You can find more information on our website at <https://www.benhamandreeves.com/membership/>



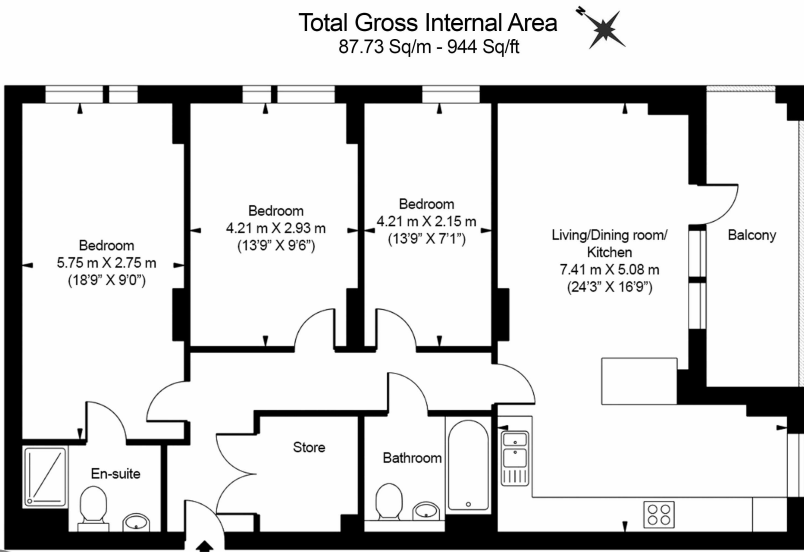
Benham & Reeves



Davies House, Vousden Grove, SE28

£577 per week, £2,500 per month + fees

www.benhams.com



Benham & Reeves

Floor Plan measurements are approximate and are for illustrative purposes only. While we do not doubt the floor plans accuracy, we make no guarantee, warranty or representation as to the accuracy and completeness of the floor plan.

Score	Energy rating	Current	Potential
92+	A		
81-91	B	86 B	86 B
69-80	C		
55-68	D		
39-54	E		
21-38	F		
1-20	G		

London branches open six days a week Mon - Sat

Canary Wharf | City | Colindale | Dartmouth Park | Ealing | Fulham
Hammersmith | Hampstead | Highgate | Hyde Park | Kensington | Kew
Knightsbridge | Nine Elms | Shoreditch | Southall | Surrey Quays
Wapping | Wembley | White City | Woolwich

International offices

China | Hong Kong SAR | India | Indonesia | Qatar | Malaysia | Middle East |
Singapore | South Africa | Thailand | Turkey



Benham & Reeves