



Benham&Reeves

**London Road, Wallington, SM6**

£300 per week, £1,300 per month + fees

 1 Bedroom    1 Bathroom    Furnished

A modern apartment , with terrace, set within in an exciting development, opposite Hackbridge station with regular trains to London Victoria

Please [click here](#) for full detail

## Property features

**One Double Bedroom | Fitted Kitchen | Open Planned Living | Fitted Bathroom | Washer/Dryer | EPC-B | Patio Area | Access to a Terrace | Hackbridge Station**

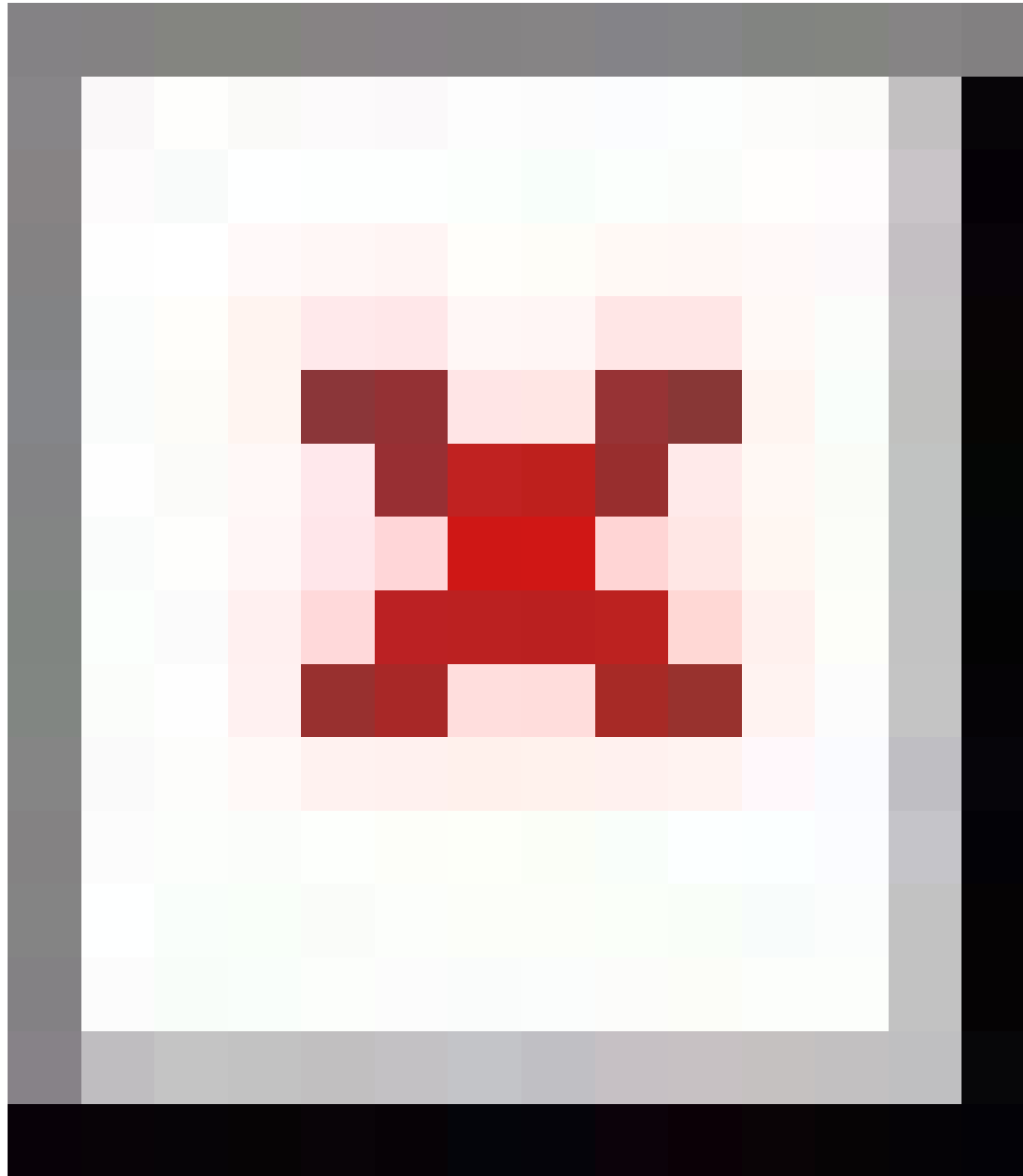
For more information about this property,  
please call our Nine Elms branch on

**020 3282 3700**



Redress & Client Money Protection :  
Benham and Reeves are members of The Property Ombudsman redress scheme and have Client Money protection with ARLA Propertymark.  
You can find more information on our website at <https://www.benhamandreeves.com/membership/>

**Benham & Reeves**



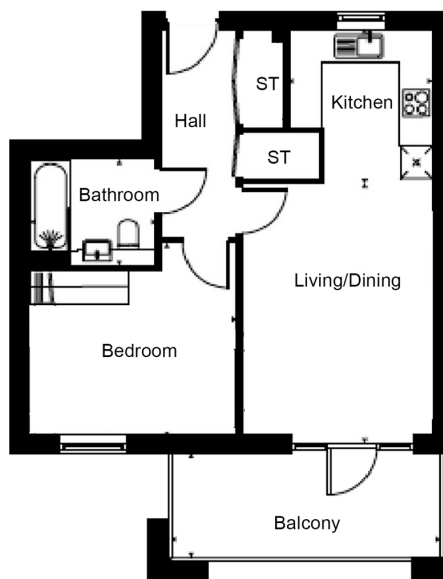
# London Road, Wallington, SM6

£300 per week, £1,300 per month + fees

www.benhams.com

## Total Gross Internal Area

49 Sq/m - 527.4 Sq/ft



Floor Plan measurements are approximate and are for illustrative purposes only. While we do not doubt the floor plans accuracy, we make no guarantee, warranty or representation as to the accuracy and completeness of the floor plan.

Energy Efficiency Rating		
	Current	Potential
Very energy efficient - lower running costs		
(92-100) A		
(81-91) B	83	83
(69-80) C		
(55-68) D		
(39-54) E		
(21-38) F		
(1-20) G		
Not energy efficient - higher running costs		
England & Wales	EU Directive 2002/91/EC	

## London branches open six days a week Mon - Sat

Canary Wharf | City | Colindale | Dartmouth Park | Ealing | Fulham  
Hammersmith | Hampstead | Highgate | Hyde Park | Kensington | Kew  
Knightsbridge | Nine Elms | Shoreditch | Southall | Surrey Quays  
Wapping | Wembley | White City | Woolwich

## International offices

China | Hong Kong SAR | India | Indonesia | Qatar | Malaysia | Middle East | Pakistan  
Singapore | South Africa | Thailand | Turkey



Benham & Reeves