



Benham & Reeves

## **Sky Gardens, Wandsworth Road, SW8**

£692 per week, £3,000 per month + fees

 1 Bedroom    1 Bathroom    Furnished

A 25th floor apartment with views towards Central London and a Winter Garden in a sought after development in Nine Elms

Please [click here](#) for full detail

## Property features

**25th floor | One double bedrooms | Open planned living | Winter Garden | Dishwasher | EPC-B | 24 hour concierge | Gym | Sky Gardens | Nine Elms and Vauxhall Stations**

For more information about this property,  
please call our Nine Elms branch on

**020 3282 3700**

Redress & Client Money Protection :

Benham and Reeves are members of The Property Ombudsman redress scheme and have Client Money protection with ARLA Propertymark. You can find more information on our website at <https://www.benhams.com/membership/>



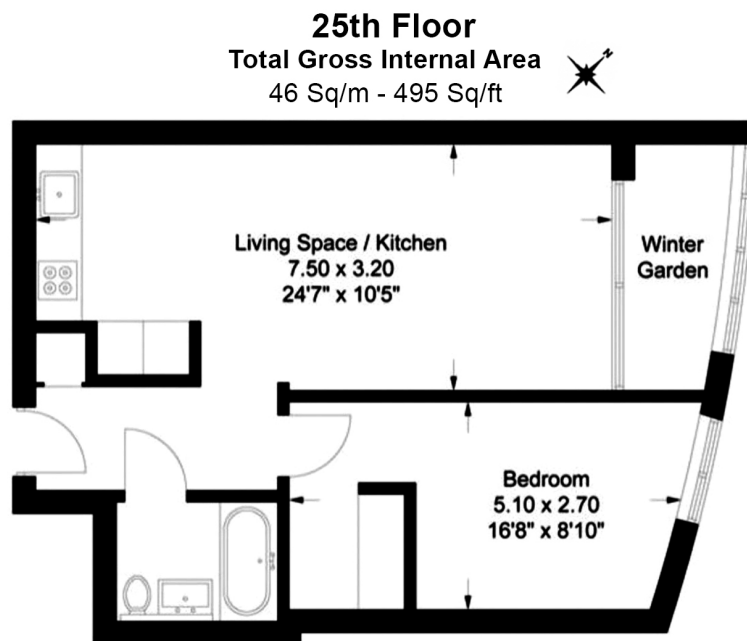
**Benham & Reeves**



# Sky Gardens, Wandsworth Road, SW8

£692 per week, £3,000 per month + fees

[www.benhams.com](http://www.benhams.com)



Floor Plan measurements are approximate and are for illustrative purposes only. While we do not doubt the floor plans accuracy, we make no guarantee, warranty or representation as to the accuracy and completeness of the floor plan.

Energy Efficiency Rating		
	Current	Potential
Very energy efficient - lower running costs		
(92-100) A		
(81-91) B	84	84
(69-80) C		
(55-68) D		
(39-54) E		
(21-38) F		
(1-20) G		
Not energy efficient - higher running costs		
England & Wales	EU Directive 2002/91/EC	

## London branches open six days a week Mon - Sat

Canary Wharf | City | Colindale | Dartmouth Park | Ealing | Fulham  
Hammersmith | Hampstead | Highgate | Hyde Park | Kensington | Kew  
Knightsbridge | Nine Elms | Shoreditch | Southall | Surrey Quays  
Wapping | Wembley | White City | Woolwich

## International offices

China | Hong Kong SAR | India | Indonesia | Qatar | Malaysia | Middle East |  
Singapore | South Africa | Thailand | Turkey



Benham & Reeves