



Benham&Reeves

Royal Mint Street, Wapping, E1

£650 per week, £2,817 per month + fees

 1 Bedroom  1 Bathroom  Furnished

Luxury apartment situated within a highly sought after development in Tower Hill. Located within a short walk into The City and minutes from the DLR and London Underground.

Please [click here](#) for full detail

Property features

Furnished One Bedroom Apartment | Open Plan Reception / Living Area With Balcony | Bespoke Fitted Kitchen With Integrated Siemens Appliances | Well Equipped Double Bedroom | Luxury Bathroom With Bespoke Vanity Counter | EPC-B | Timber Floors, LED Mood Lighting, Underfloor Heating | Concierge, Residents Lounge, Pool, Jacuzzi, Gym & Yoga | Short Walk To The City, St Catherines Docks | Tower Hill (Underground), Tower Gateway (DLR)

For more information about this property,
please call our Wapping branch on

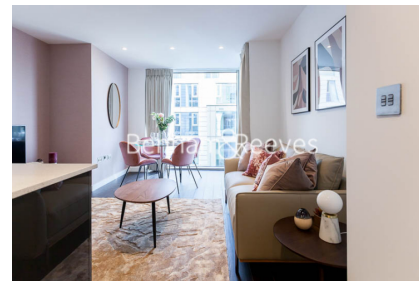
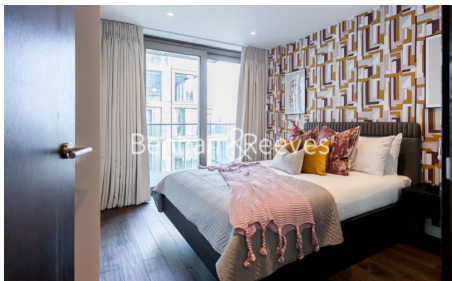
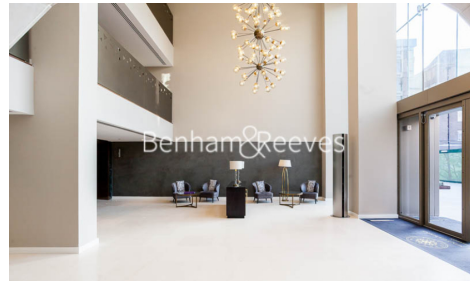
020 7680 8900

Redress & Client Money Protection :

Benham and Reeves are members of The Property Ombudsman redress scheme and have Client Money protection with ARLA Propertymark. You can find more information on our website at <https://www.benhamandreeves.com/membership/>



Benham & Reeves



Royal Mint Street, Wapping, E1

£650 per week, £2,817 per month + fees

www.benhams.com

Score	Energy rating	Current	Potential
92+	A		
81-91	B	83 B	83 B
69-80	C		
55-68	D		
39-54	E		
21-38	F		
1-20	G		

London branches open six days a week Mon - Sat

Canary Wharf | City | Colindale | Dartmouth Park | Ealing | Fulham
Hammersmith | Hampstead | Highgate | Hyde Park | Kensington | Kew
Knightsbridge | Nine Elms | Shoreditch | Southall | Surrey Quays
Wapping | Wembley | White City | Woolwich

International offices

China | Hong Kong SAR | India | Israel | Malaysia | Middle East | Pakistan
Qatar | Singapore | South Africa | Thailand | Turkey

