



Benham & Reeves

Landmark Place, Water Lane, EC3R

£738 per week, £3,198 per month + fees

 1 Bedroom  1 Bathroom  Furnished

Luxury apartment situated within a desirable, prestigious development close to Tower Bridge, The City of London, Tower Hill (Circle and District Line), Tower Gateway (DLR) and Monument (Northern, Circle & District line), as well as the Thames Clipper service at Tower Pier along with London Bridge station being a short walk over the bridge itself.

Please [click here](#) for full detail

Property features

One Spacious Bedroom | Bespoke bathroom | High Quality Finish Throughout | Kitchen Fitted with High End Appliances | Furnished | EPC-B | 24-Hour Concierge, Residents Gym, Pool & Cinema | Private Balcony | Tower Hill and Monument Stations Nearby

For more information about this property,
please call our Property Management branch on

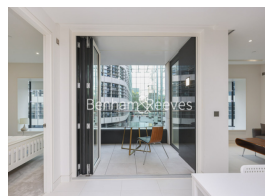
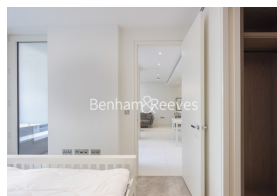
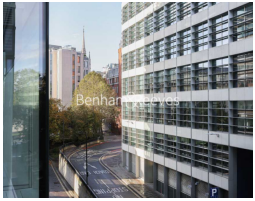
020 7319 9740

Redress & Client Money Protection :

Benham and Reeves are members of The Property Ombudsman redress scheme and have Client Money protection with ARLA Propertymark. You can find more information on our website at <https://www.benhams.com/membership/>



Benham & Reeves

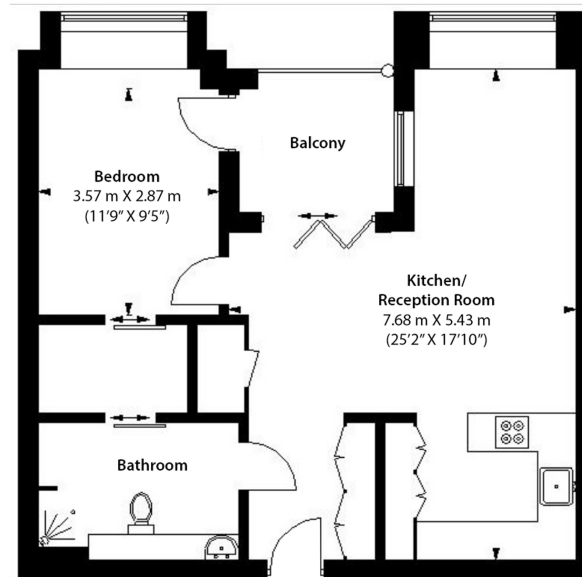


Landmark Place, Water Lane, EC3R

£738 per week, £3,198 per month + fees

www.benhams.com

3rd Floor
Total Gross Internal Area
57.7 Sq/m - 621 Sq/ft



Floor Plan measurements are approximate and are for illustrative purposes only. While we do not doubt the floor plans accuracy, we make no guarantee, warranty or representation as to the accuracy and completeness of the floor plan.

London branches open six days a week Mon - Sat

Canary Wharf | City | Colindale | Dartmouth Park | Ealing | Fulham
Hammersmith | Hampstead | Highgate | Hyde Park | Kensington | Kew
Knightsbridge | Nine Elms | Shoreditch | Southall | Surrey Quays
Wapping | Wembley | White City | Woolwich

International offices

China | Hong Kong SAR | India | Indonesia | Qatar | Malaysia | Middle East |
Singapore | South Africa | Thailand | Turkey



Benham & Reeves