



Benham & Reeves

**Chelsea Botanica, Watermeadow Lane, SW6**

£623 per week, £2,700 per month + fees

 1 Bedroom     1 Bathroom     Furnished

A brand-new, contemporary, riverside apartment situated within a highly sought-after development with exceptional range of resident facilities in Fulham

Please [click here](#) for full detail

## Property features

**Large 1 bedroom | High spec brand new development | Peloton gym included | 24 hour concierge | Landscaped communal gardens | EPC- B | Large private balcony | Adjacent to Imperial Park | Modern family bathroom | Short walk to Thames & Transport links**

For more information about this property,  
please call our Fulham branch on

**020 7348 7620**

Redress & Client Money Protection :

Benham and Reeves are members of The Property Ombudsman redress scheme and have Client Money protection with ARLA Propertymark. You can find more information on our website at <https://www.benhams.com/membership/>



Benham&Reeves

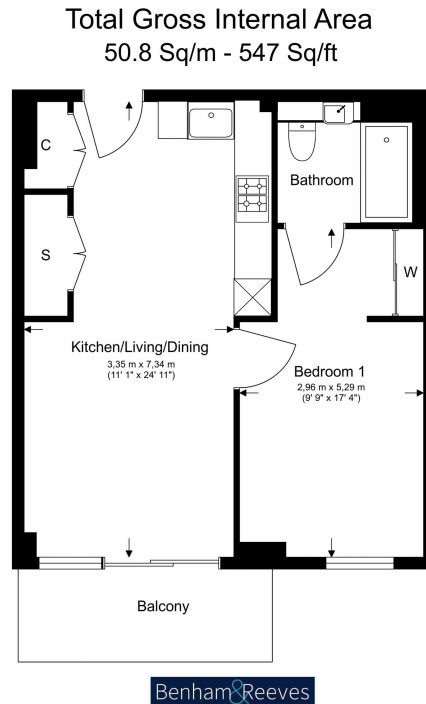




# Chelsea Botanica, Watermeadow Lane, SW6

£623 per week, £2,700 per month + fees

[www.benhams.com](http://www.benhams.com)



Floor Plan measurements are approximate and are for illustrative purposes only. While we do not doubt the floor plans accuracy, we make no guarantee, warranty or representation as to the accuracy and completeness of the floor plan.

## London branches open six days a week Mon - Sat

Canary Wharf | City | Colindale | Dartmouth Park | Ealing | Fulham  
Hammersmith | Hampstead | Highgate | Hyde Park | Kensington | Kew  
Knightsbridge | Nine Elms | Shoreditch | Southall | Surrey Quays  
Wapping | Wembley | White City | Woolwich

## International offices

China | Hong Kong SAR | India | Indonesia | Qatar | Malaysia | Middle East |  
Singapore | South Africa | Thailand | Turkey



Benham & Reeves