



Benham & Reeves

Bower House, West Hendon , NW9

£542 per week, £2,350 per month + fees

 2 Bedrooms  2 Bathrooms  Furnished

This exceptionally elegant apartment is situated in a sought-after prestigious development in Hendon. Designed for contemporary living and benefitting from convenient Thameslink transport connections to the City centre.

Please [click here](#) for full detail

Property features

Bright, open-plan living and dining area | Two generously sized double bedrooms with ample storage | Fully Furnished | Private balcony with views over landscaped communal gardens | Concierge service | EPC - TBC | Secure cycle storage | Access to expansive green spaces | Seamless commute to Central London | Close proximity to Hendon Station and Colindale Underground

For more information about this property,
please call our Hampstead branch on

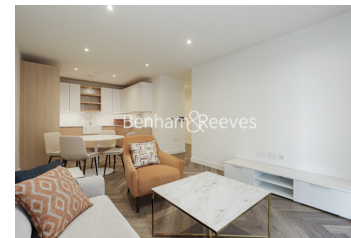
020 7435 9681

Redress & Client Money Protection :

Benham and Reeves are members of The Property Ombudsman redress scheme and have Client Money protection with ARLA Propertymark. You can find more information on our website at <https://www.benhamandreeves.com/membership/>



Benham & Reeves



Bower House, West Hendon , NW9

£542 per week, £2,350 per month + fees

www.benhams.com

London branches open six days a week Mon - Sat

Canary Wharf | City | Colindale | Dartmouth Park | Ealing | Fulham
Hammersmith | Hampstead | Highgate | Hyde Park | Kensington | Kew
Knightsbridge | Nine Elms | Shoreditch | Southall | Surrey Quays
Wapping | Wembley | White City | Woolwich

International offices

China | Hong Kong SAR | India | Indonesia | Qatar | Malaysia | Middle East | Pakistan
Singapore | South Africa | Thailand | Turkey

