



Benham & Reeves

Radnor Terrace, West Kensington, W14

£1,200 per week, £5,200 per month + fees

 2 Bedrooms  2 Bathrooms  Furnished

Spacious 8th floor apartment situated within an exclusive development in West Kensington, one of the most coveted areas of London. Perfectly located near Kensington Olympia (District Line) Underground and overground stations.

Please [click here](#) for full detail

Property features

2 Bedrooms | 2 Bathrooms | Reception | Furnished | Fitted Kitchen | EPC-B | Underground Parking | 24 Hour Concierge/Lift | Nearby Kensington Olympia Station

For more information about this property,
please call our Kensington branch on

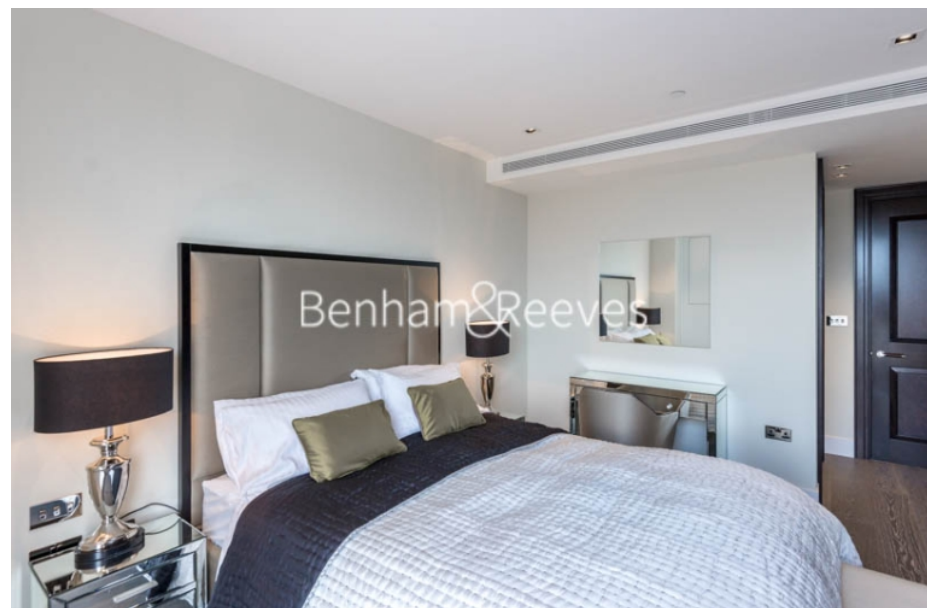
020 7938 3522

Redress & Client Money Protection :

Benham and Reeves are members of The Property Ombudsman redress scheme and have Client Money protection with ARLA Propertymark. You can find more information on our website at <https://www.benhams.com/membership/>



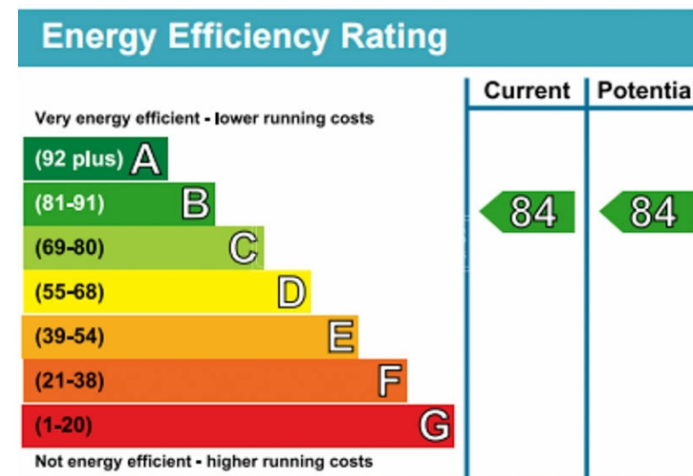
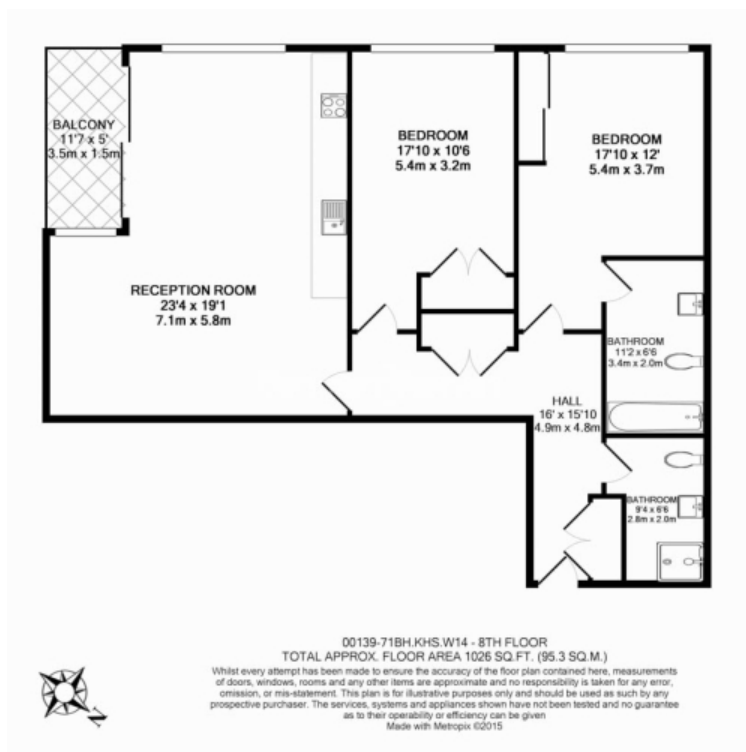
Benham & Reeves



Radnor Terrace, West Kensington, W14

£1,200 per week, £5,200 per month + fees

www.benhams.com



London branches open six days a week Mon - Sat

Canary Wharf | City | Colindale | Dartmouth Park | Ealing | Fulham
Hammersmith | Hampstead | Highgate | Hyde Park | Kensington | Kew
Knightsbridge | Nine Elms | Shoreditch | Southall | Surrey Quays
Wapping | Wembley | White City | Woolwich

International offices

China | Hong Kong SAR | India | Israel | Malaysia | Middle East | Pakistan
Qatar | Singapore | South Africa | Thailand | Turkey



Benham & Reeves