



Benham & Reeves

Lillie Square, Earls Court, SW6

£1,195 per week, £5,178 per month + fees

 3 Bedrooms  2 Bathrooms  Furnished

A stunning, bright, interior designed apartment, with a wonderful wall garden feature, situated in a luxury development with an array of 5 * facilities. Perfectly located for West Brompton Underground and Overground and the local amenities of Earls Court and South Kensington.

Please [click here](#) for full detail

Property features

Air conditioned | Balcony | 24-hour Concierge | Parking | Pool | EPC-B | Gym | Spa | Views over the London Skyline | Nearby West Brompton Tube Station

For more information about this property,
please call our Hyde Park branch on

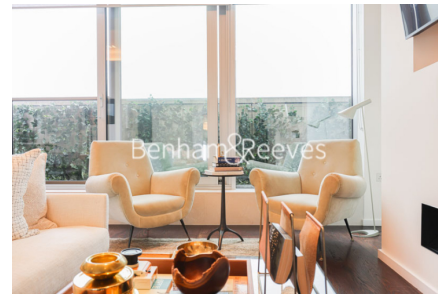
020 7402 9866

Redress & Client Money Protection :

Benham and Reeves are members of The Property Ombudsman redress scheme and have Client Money protection with ARLA Propertymark. You can find more information on our website at <https://www.benhamandreeves.com/membership/>



Benham & Reeves

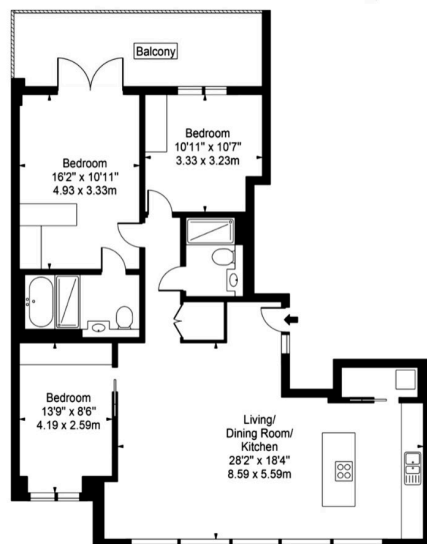


Lillie Square, Earls Court, SW6

£1,195 per week, £5,178 per month + fees

www.benhams.com

Sixth Floor
Total Gross Internal Area
100.06 Sq/m - 1077 Sq/ft



Floor Plan measurements are approximate and are for illustrative purposes only. While we do not doubt the floor plans accuracy, we make no guarantee, warranty or representation as to the accuracy and completeness of the floor plan.

Score	Energy rating	Current	Potential
92+	A		
81-91	B	84 B	84 B
69-80	C		
55-68	D		
39-54	E		
21-38	F		
1-20	G		

London branches open six days a week Mon - Sat

Canary Wharf | City | Colindale | Dartmouth Park | Ealing | Fulham
Hammersmith | Hampstead | Highgate | Hyde Park | Kensington | Kew
Knightsbridge | Nine Elms | Shoreditch | Southall | Surrey Quays
Wapping | Wembley | White City | Woolwich

International offices

China | Hong Kong SAR | India | Israel | Malaysia | Middle East | Pakistan
Qatar | Singapore | South Africa | Thailand | Turkey



Benham & Reeves