



Benham & Reeves

## **Buckingham Gate, Westminster SW1E**

£2,800 per week, £12,133 per month + fees

 3 Bedrooms    3 Bathrooms    Furnished

A spectacular 3-Bedroom PENTHOUSE apartment occupying the 7th & 8th floors of a beautiful period building situated adjacent to BUCKINGHAM PALACE with exceptional views from a private TERRACE.

Please [click here](#) for full detail

## Property features

**3 Bedrooms | 3 Bathrooms | Penthouse | 2 Receptions | Fully-Fitted Kitchen | EPC-C | Furnished | Porter | Private Terrace & Separate Balcony | St. James Park And Victoria Station**

For more information about this property,  
please call our Knightsbridge branch on

**020 7581 2112**

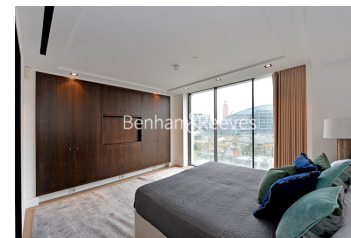
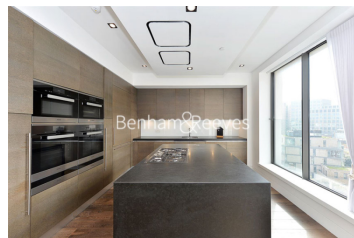
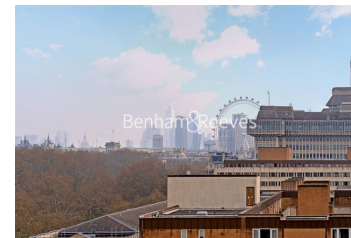
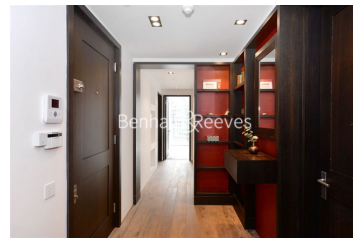
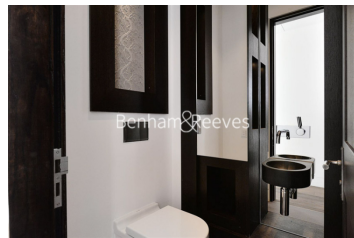
Redress & Client Money Protection :

Benham and Reeves are members of The Property Ombudsman redress scheme and have Client Money protection with ARLA Propertymark. You can find more information on our website at <https://www.benhamandreeves.com/membership/>



Benham & Reeves

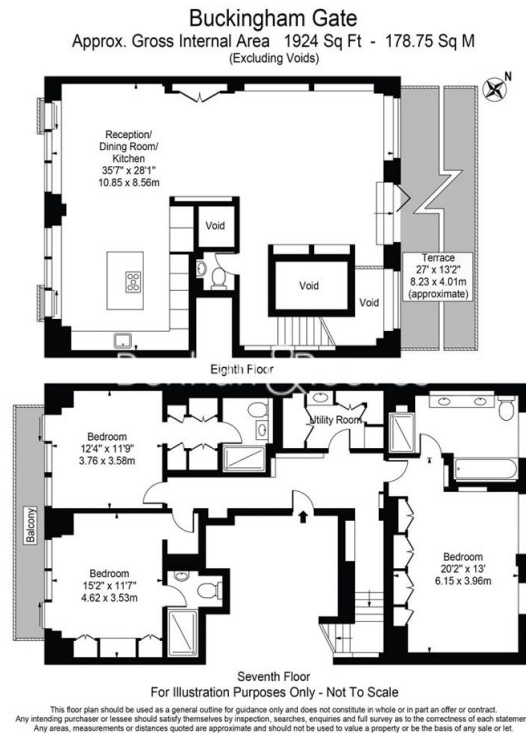




# Buckingham Gate, Westminster SW1E

£2,800 per week, £12,133 per month + fees

[www.benhams.com](http://www.benhams.com)



## London branches open six days a week Mon - Sat

Canary Wharf | City | Colindale | Dartmouth Park | Ealing | Fulham  
Hammersmith | Hampstead | Highgate | Hyde Park | Kensington | Kew  
Knightsbridge | Nine Elms | Shoreditch | Southall | Surrey Quays  
Wapping | Wembley | White City | Woolwich

## International offices

China | Hong Kong SAR | India | Israel | Malaysia | Middle East | Pakistan  
Qatar | Singapore | South Africa | Thailand | Turkey



Benham & Reeves