



Benham & Reeves

9 Millbank, Westminster, SW1P

£1,650 per week, £7,150 per month + fees

 2 Bedrooms  2 Bathrooms  Furnished

A stunning 1,338 sq ft luxury TWO-BEDROOM luxury apartment in 9 MILLBANK near the River Thames and featuring resident amenities such as a Gym, Swimming Pool & 24 Hr Concierge.

Please [click here](#) for full detail

Property features

2 Bedrooms | 2 Bathrooms | Open Plan Reception | Fully-Fitted Kitchen | Cloakroom | EPC-B | Utility Room | 24 Hr Concierge | Gym | Westminster Station

For more information about this property,
please call our Knightsbridge branch on

020 7581 2112

Redress & Client Money Protection :

Benham and Reeves are members of The Property Ombudsman redress scheme and have Client Money protection with ARLA Propertymark. You can find more information on our website at <https://www.benhamandreeves.com/membership/>



Benham&Reeves



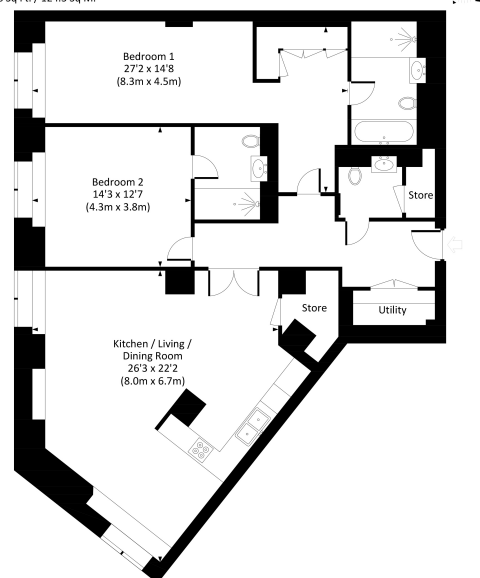
9 Millbank, Westminster, SW1P

£1,650 per week, £7,150 per month + fees

www.benhams.com

MILLBANK, SW1P

Approx. gross internal area
1338 Sq Ft. / 124.3 Sq M.



FIFTH FLOOR

CH 2.81 / 2.80



All measurements have been made in accordance with RICS code of Measuring Practice which are approximate only and only for illustrative purposes. For the avoidance of doubt, Dowling Jones Design shall not be liable for any reliance on these measurements. © 2023 www.dowlingjones.com (020 7630 9933)

Score	Energy rating	Current	Potential
92+	A		
81-91	B	86 B	86 B
69-80	C		
55-68	D		
39-54	E		
21-38	F		
1-20	G		

London branches open six days a week Mon - Sat

Canary Wharf | City | Colindale | Dartmouth Park | Ealing | Fulham
Hammersmith | Hampstead | Highgate | Hyde Park | Kensington | Kew
Knightsbridge | Nine Elms | Shoreditch | Southall | Surrey Quays
Wapping | Wembley | White City | Woolwich

International offices

China | Hong Kong SAR | India | Indonesia | Qatar | Malaysia | Middle East | Pakistan
Singapore | South Africa | Thailand | Turkey



Benham & Reeves