



Benham & Reeves

Rosamond House, Westminster, SW1P

£669 per week, £2,899 per month + fees

🛏️ 1 Bedroom 🚿 1 Bathroom 🛋️ Furnished

A stylish ground floor 592 sq ft ONE-BEDROOM apartment in the popular WESTMINSTER QUARTER featuring a large private TERRACE, fitness suite, Roof Top Residents Garden with skyline views and 24 Hr Concierge. The property is located in a highly-desired area of Central London with access to a variety of lifestyle & transport services.

Please [click here](#) for full detail

Property features

ONE BEDROOM | OPEN PLAN RECEPTION | PRIVATE TERRACE | 592 sq ft | FULLY-FITTED KITCHEN | EPC-B | ROOF GARDEN | FITNESS SUITE | 24 HR CONCIERGE | ST. JAMES'S PARK, WESTMINSTER & VICTORIA STATIONS

For more information about this property,
please call our Hyde Park branch on

020 7402 9866

Redress & Client Money Protection :

Benham and Reeves are members of The Property Ombudsman redress scheme and have Client Money protection with ARLA Propertymark. You can find more information on our website at <https://www.benhamandreeves.com/membership/>



Benham & Reeves

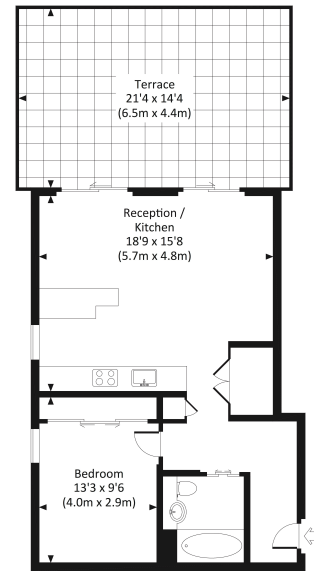


Rosamond House, Westminster, SW1P

£669 per week, £2,899 per month + fees

www.benhams.com

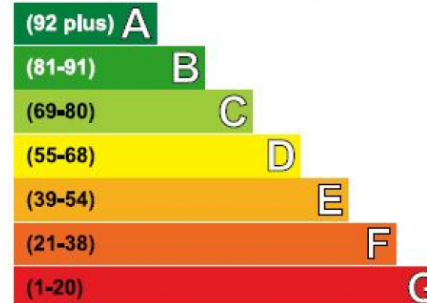
Approx. gross internal area
573 Sq.Ft. / 53.2 Sq.M.



GROUND FLOOR

Energy Efficiency Rating

Very energy efficient - lower running costs



Not energy efficient - higher running costs

Current	Potential
85	85

London branches open six days a week Mon - Sat

Canary Wharf | City | Colindale | Dartmouth Park | Ealing | Fulham
Hammersmith | Hampstead | Highgate | Hyde Park | Kensington | Kew
Knightsbridge | Nine Elms | Shoreditch | Southall | Surrey Quays
Wapping | Wembley | White City | Woolwich

International offices

China | Hong Kong SAR | India | Indonesia | Qatar | Malaysia | Middle East |
Singapore | South Africa | Thailand | Turkey



Benham & Reeves