



Benham & Reeves

Millbank Quarter, Westminster, SW1P

£1,250 per week, £5,417 per month + fees

 2 Bedrooms  2 Bathrooms  Furnished

A spacious apartment situated in an historic Grade II listed building with 5* resident's facilities, located off the River Thames and a short walk from Westminster Village, St James, and Victoria

Please [click here](#) for full detail

Property features

4th Floor | High Spec | Historic Development | Open planned | Furnished | EPC-B | 24hr Concierge | Gym | Swimmim Pool/ Residence Facilities | Westminster Station

For more information about this property,
please call our Nine Elms branch on

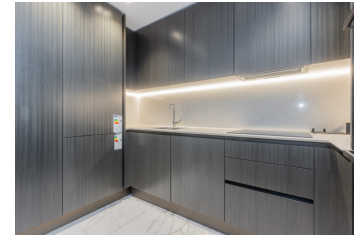
020 3282 3700

Redress & Client Money Protection :

Benham and Reeves are members of The Property Ombudsman redress scheme and have Client Money protection with ARLA Propertymark. You can find more information on our website at <https://www.benhams.com/membership/>



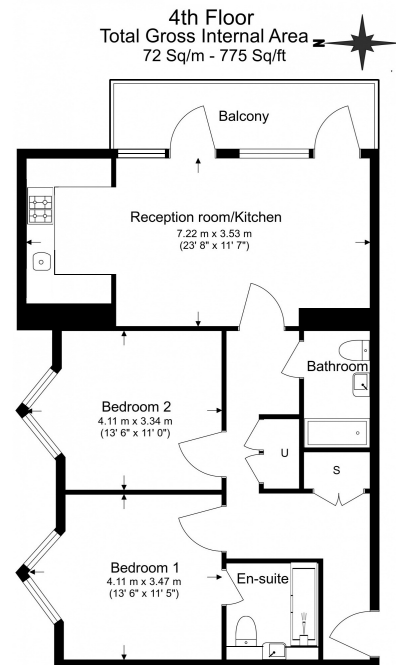
Benham & Reeves



Millbank Quarter, Westminster, SW1P

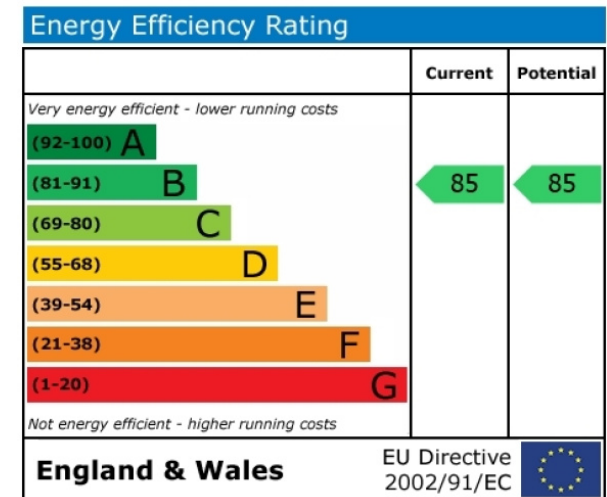
£1,250 per week, £5,417 per month + fees

www.benhams.com



Benham&Reeves

Floor Plan measurements are approximate and are for illustrative purposes only. While we do not doubt the floor plans accuracy, we make no guarantee, warranty or representation as to the accuracy and completeness of the floor plan.



London branches open six days a week Mon - Sat

Canary Wharf | City | Colindale | Dartmouth Park | Ealing | Fulham
Hammersmith | Hampstead | Highgate | Hyde Park | Kensington | Kew
Knightsbridge | Nine Elms | Shoreditch | Southall | Surrey Quays
Wapping | Wembley | White City | Woolwich

International offices

China | Hong Kong SAR | India | Indonesia | Qatar | Malaysia | Middle East |
Singapore | South Africa | Thailand | Turkey



Benham&Reeves