



Benham&Reeves

Abell House, Westminster, SW1P

£1,550 per week, £6,717 per month + fees

 2 Bedrooms  2 Bathrooms  Furnished

A stunning 1,484 sq ft TWO-BEDROOM apartment with private BALCONY in the highly-desired ABELL HOUSE in the heart of WESTMINSTER. Residents are spoilt for choice with a range of exclusive amenities including 24-Hr Concierge, a luxury Fitness Suite, SWIMMING POOL, Sauna & Steam rooms and lush gardens. CAR PARKING SPACE included.

Please [click here](#) for full detail

Property features

2 Bedrooms | 2 Bathrooms | Reception | 1,484 sq ft | Fully-Fitted Kitchen | EPC-B | Swimming Pool | Balcony | Parking Space | Nearby Westminster and Pimlico Tube Stations

For more information about this property,
please call our Knightsbridge branch on

020 7581 2112

Redress & Client Money Protection :

Benham and Reeves are members of The Property Ombudsman redress scheme and have Client Money protection with ARLA Propertymark. You can find more information on our website at <https://www.benhamandreeves.com/membership/>



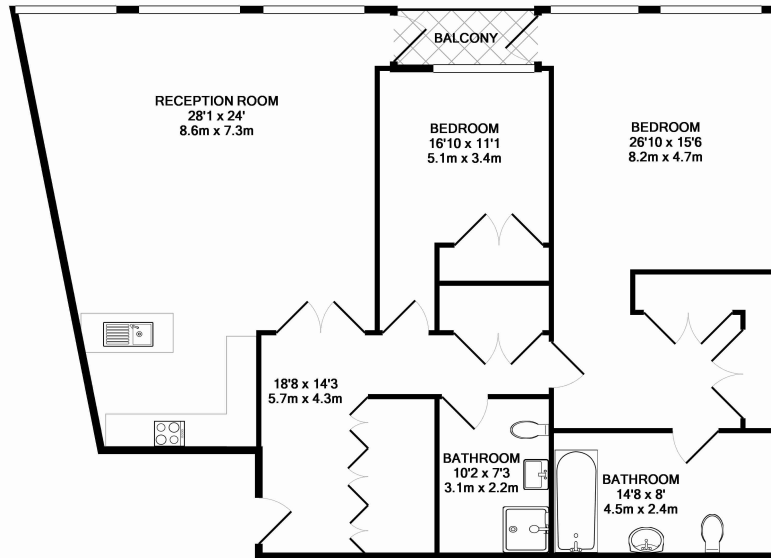
Benham & Reeves



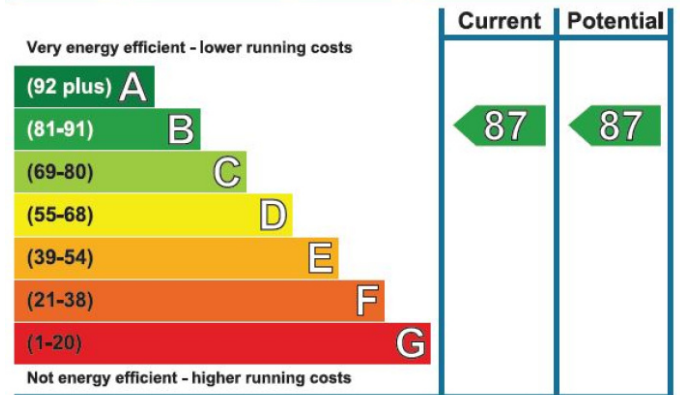
Abell House, Westminster, SW1P

£1,550 per week, £6,717 per month + fees

www.benhams.com



Energy Efficiency Rating



London branches open six days a week Mon - Sat

Canary Wharf | City | Colindale | Dartmouth Park | Ealing | Fulham
Hammersmith | Hampstead | Highgate | Hyde Park | Kensington | Kew
Knightsbridge | Nine Elms | Shoreditch | Southall | Surrey Quays
Wapping | Wembley | White City | Woolwich

International offices

China | Hong Kong SAR | India | Indonesia | Qatar | Malaysia | Middle East | Pakistan
Singapore | South Africa | Thailand | Turkey



Benham & Reeves