



Benham & Reeves

**Bouchon Point, Whitechapel, E1**

£825 per week, £3,575 per month + fees

 2 Bedrooms    2 Bathrooms    Furnished

Furnished light filled apartment situated within a desirable development, excellently located Aldgate East and Shoreditch High Street Station.

Please [click here](#) for full detail

## Property features

**Luxury 2 Bedroom Apartment | Family size Bathroom and Ensuite | Fitted Open Plan Kitchen With Integrated Siemens Appliances | Bespoke Bathroom & En-Suite | Floor To Ceiling Windows | EPC-B | 24hr Concierge, Residents Gym | Cinema, Landscape roof Gardens | Private Balcony | Moments To Whitechapel and Aldgate East Underground Station**

For more information about this property, please call our Wapping branch on

**020 7680 8900**

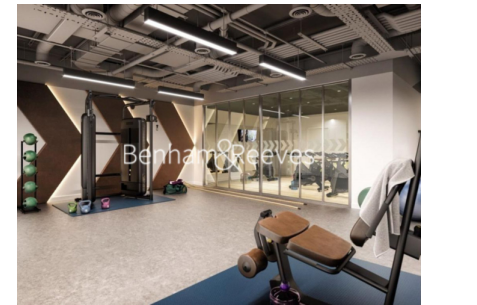
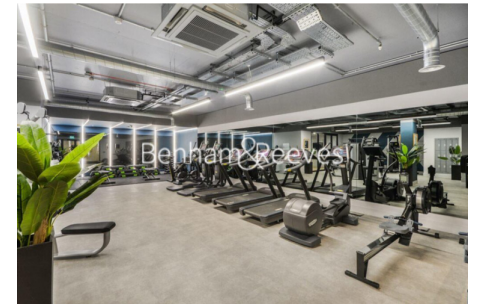
Redress & Client Money Protection :

Benham and Reeves are members of The Property Ombudsman redress scheme and have Client Money protection with ARLA Propertymark. You can find more information on our website at <https://www.benhams.com/membership/>



**Benham & Reeves**





# Bouchon Point, Whitechapel, E1

£825 per week, £3,575 per month + fees

[www.benhams.com](http://www.benhams.com)



Score	Energy rating	Current	Potential
92+	A		
81-91	B	86 B	86 B
69-80	C		
55-68	D		
39-54	E		
21-38	F		
1-20	G		

## London branches open six days a week Mon - Sat

Canary Wharf | City | Colindale | Dartmouth Park | Ealing | Fulham  
Hammersmith | Hampstead | Highgate | Hyde Park | Kensington | Kew  
Knightsbridge | Nine Elms | Shoreditch | Southall | Surrey Quays  
Wapping | Wembley | White City | Woolwich

## International offices

China | Hong Kong SAR | India | Indonesia | Qatar | Malaysia | Middle East | Pakistan  
Singapore | South Africa | Thailand | Turkey



Benham & Reeves