



Benham&Reeves

## **Tapestry Way, Whitechapel, E1**

£555 per week, £2,405 per month + fees

 1 Bedroom     1 Bathroom     Furnished

Luxury, high floor one bedroom apartment situated in a highly sought after development in Whitechapel moments from Queen Mary University and within easy reach of Brick Lane, The City and Canary Wharf.

Please [click here](#) for full detail

## Property features

**Luxury One Bedroom Apartment | Porcelain Floors, Underfloor Heating & Full-Length Windows | Open Plan Reception Area With Dual Aspect | Private Balcony With Views Of The City & Canary Wharf | Fitted Kitchen With Fully Integrated Appliances | EPC-B | Double Bedroom Equipped With Fitted Wardrobe | Bespoke Family Size Bathroom | Close To The City, Canary Wharf, Brick Lane & Shoreditch | Short Walk To Whitechapel Station**

For more information about this property,  
please call our Wapping branch on

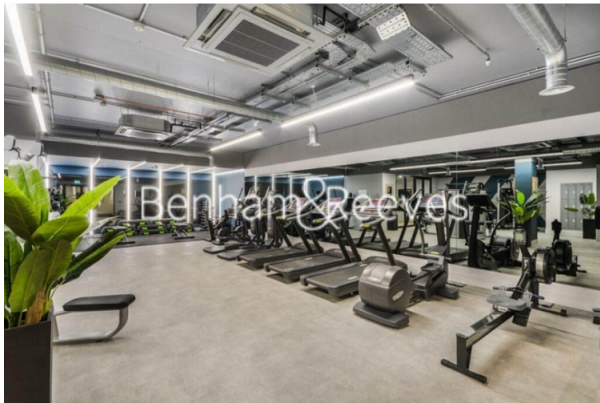
**020 7680 8900**

Redress & Client Money Protection :

Benham and Reeves are members of The Property Ombudsman redress scheme and have Client Money protection with ARLA Propertymark. You can find more information on our website at <https://www.benhamandreeves.com/membership/>



**Benham & Reeves**

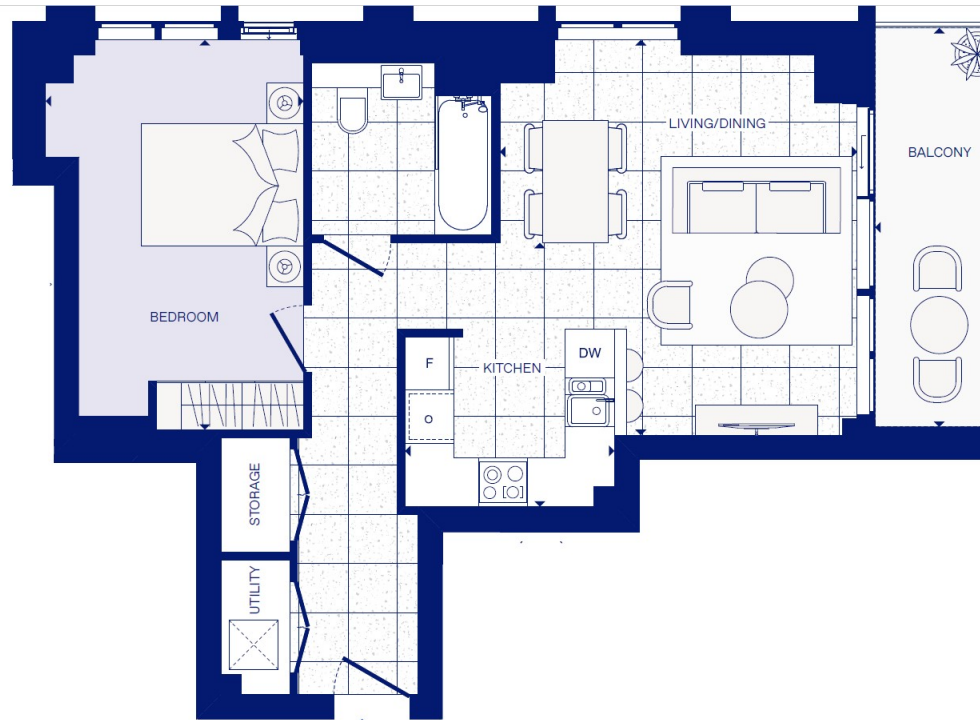




# Tapestry Way, Whitechapel, E1

£555 per week, £2,405 per month + fees

[www.benhams.com](http://www.benhams.com)



Score	Energy rating	Current	Potential
92+	A		
81-91	B	84   B	84   B
69-80	C		
55-68	D		
39-54	E		
21-38	F		
1-20	G		

## London branches open six days a week Mon - Sat

Canary Wharf | City | Colindale | Dartmouth Park | Ealing | Fulham  
Hammersmith | Hampstead | Highgate | Hyde Park | Kensington | Kew  
Knightsbridge | Nine Elms | Shoreditch | Southall | Surrey Quays  
Wapping | Wembley | White City | Woolwich

## International offices

China | Hong Kong SAR | India | Israel | Malaysia | Middle East | Pakistan  
Qatar | Singapore | South Africa | Thailand | Turkey

