



Benham & Reeves

Kensington High Street, Wolfe House, W14

£995 per week, £4,312 per month + fees

 2 Bedrooms  2 Bathrooms  Furnished

A bright and spacious apartment with off-street parking, located in a modern development close to the shops, amenities, and excellent transport links in Kensington

Please [click here](#) for full detail

Property features

Two Bedroom Apartment | Two Bathrooms | Furnished | Swimming Pool & Spa | Cinema Room | EPC-B | 24-Hour Concierge | Close To Kensington High Street | Close to amenities | Excellent transport links of Kensington

For more information about this property,
please call our Kensington branch on

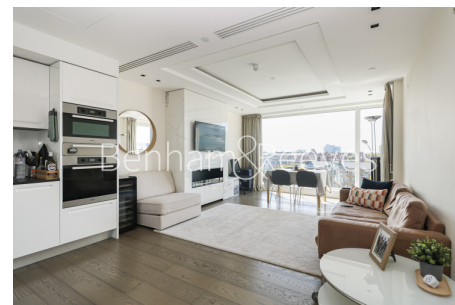
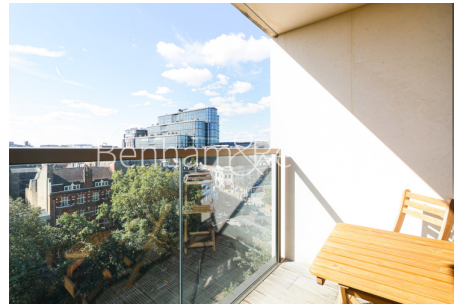
020 7938 3522

Redress & Client Money Protection :

Benham and Reeves are members of The Property Ombudsman redress scheme and have Client Money protection with ARLA Propertymark. You can find more information on our website at <https://www.benhamandreeves.com/membership/>



Benham&Reeves



Kensington High Street, Wolfe House, W14

£995 per week, £4,312 per month + fees

www.benhams.com

Total Gross Internal Area
83.4 Sq/m - 897 Sq/ft



Floor Plan measurements are approximate and are for illustrative purposes only. While we do not doubt the floor plans accuracy, we make no guarantee, warranty or representation as to the accuracy and completeness of the floor plan.

London branches open six days a week Mon - Sat

Canary Wharf | City | Colindale | Dartmouth Park | Ealing | Fulham
Hammersmith | Hampstead | Highgate | Hyde Park | Kensington | Kew
Knightsbridge | Nine Elms | Shoreditch | Southall | Surrey Quays
Wapping | Wembley | White City | Woolwich

International offices

China | Hong Kong SAR | India | Indonesia | Qatar | Malaysia | Middle East |
Singapore | South Africa | Thailand | Turkey



Benham & Reeves