



Benham & Reeves

Dragonfly Walk, Woodberry Down Development, N4

£531 per week, £2,300 per month + fees

 1 Bedroom  1 Bathroom  Furnished

BRAND NEW!

Bright and light, designer furnished, 10th floor apartment situated in a desirable development, with video entry phone system and communal lift, positioned within walking distance from Manor House (Piccadilly Line).

Please [click here](#) for full detail

Property features

Brand New Apartment | Designer Furnished | One Double Bedroom | Fully Fitted Modern Kitchen | One Family Bathroom | EPC-B | Open Plan Reception Room | 24/7 Concierge Service | Secured Bike Storage | Walking Distance To Manor House Tube Station

For more information about this property, please call our Highgate branch on

020 8341 2335

Redress & Client Money Protection :

Benham and Reeves are members of The Property Ombudsman redress scheme and have Client Money protection with ARLA Propertymark. You can find more information on our website at <https://www.benhams.com/membership/>



Benham & Reeves

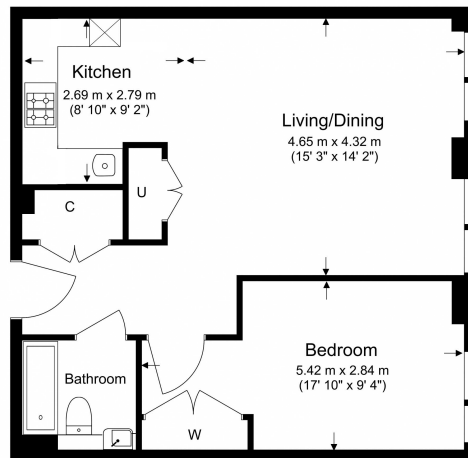


Dragonfly Walk, Woodberry Down Development, N4

£531 per week, £2,300 per month + fees

www.benhams.com

10th Floor
Total Gross Internal Area
54 Sq/m - 581 Sq/ft



Benham & Reeves

Floor Plan measurements are approximate and are for illustrative purposes only. While we do not doubt the floor plans accuracy, we make no guarantee, warranty or representation as to the accuracy and completeness of the floor plan.

Score	Energy rating	Current	Potential
92+	A		
81-91	B	85 B	85 B
69-80	C		
55-68	D		
39-54	E		
21-38	F		
1-20	G		

London branches open six days a week Mon - Sat

Canary Wharf | City | Colindale | Dartmouth Park | Ealing | Fulham
Hammersmith | Hampstead | Highgate | Hyde Park | Kensington | Kew
Knightsbridge | Nine Elms | Shoreditch | Southall | Surrey Quays
Wapping | Wembley | White City | Woolwich

International offices

China | Hong Kong SAR | India | Indonesia | Qatar | Malaysia | Middle East |
Singapore | South Africa | Thailand | Turkey



Benham & Reeves