



Benham & Reeves

Love Lane, Woolwich Central, SE18

£462 per week, £2,000 per month + fees

 2 Bedrooms  1 Bathroom  Furnished

Contemporary furnished 11th floor apartment situated in an ever-popular Woolwich central development offering a unique panoramic view of Woolwich Town. Located moments away from Woolwich Arsenal Elizabeth Line, DLR & National rail links.

Please [click here](#) for full detail

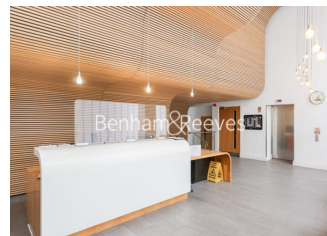
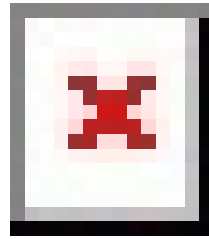
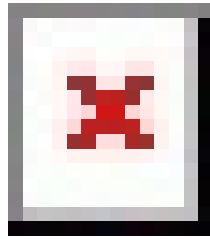
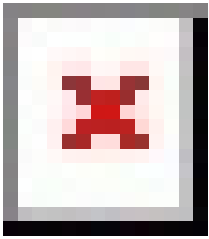
Property features

2 Double Bedroom Apartment with Built in Wardrobe | Open plan kitchen with well known integrated Appliances | Bright and Airy Spaces with Open Plan Layout | Private Balcony | 24 Concierge Service with CCTV security | EPC-C | Ample Inbuilt Storage | Excellent on-site amenities, shops, bars, restaurants | Minutes to Woolwich DLR and Elizabeth Line Cross Rail

For more information about this property,
please call our Woolwich branch on

020 8051 0700

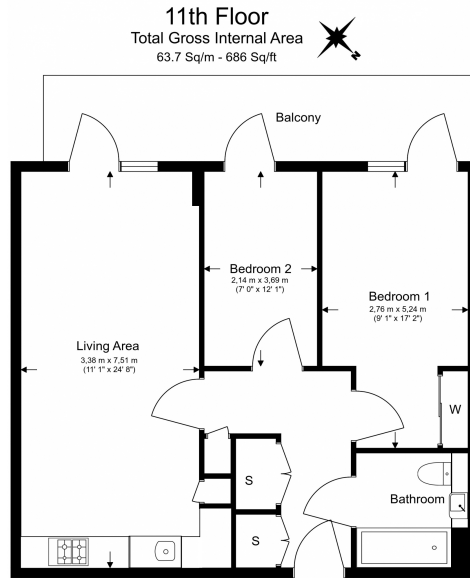




Love Lane, Woolwich Central, SE18

£462 per week, £2,000 per month + fees

www.benhams.com



Floor Plan measurements are approximate and are for illustrative purposes only. While we do not doubt the floor plans accuracy, we make no guarantee, warranty or representation as to the accuracy and completeness of the floor plan.

Score	Energy rating	Current	Potential
92+	A		
81-91	B		
69-80	C	78 C	78 C
55-68	D		
39-54	E		
21-38	F		
1-20	G		

London branches open six days a week Mon - Sat

Canary Wharf | City | Colindale | Dartmouth Park | Ealing | Fulham
Hammersmith | Hampstead | Highgate | Hyde Park | Kensington | Kew
Knightsbridge | Nine Elms | Shoreditch | Southall | Surrey Quays
Wapping | Wembley | White City | Woolwich

International offices

China | Hong Kong SAR | India | Indonesia | Qatar | Malaysia | Middle East |
Singapore | South Africa | Thailand | Turkey

