



Benham & Reeves

Vista Building, Woolwich High Street, SE18

£542 per week, £2,350 per month + fees

 2 Bedrooms  2 Bathrooms  Furnished

Spacious decorated, furnished 10 and 11th floor duplex apartment situated in a secure development in Central Woolwich. Close to both DRL and Elizabeth Line tube station.

Please [click here](#) for full detail

Property features

2 bed 2 bath property located on the 10 and 11 floor | Open plan kitchen with spacious living room | Both double bedrooms and the master room attached | Concierge service | Private balcony | EPC- C | Close to local amenities | Furnished | Moments to Woolwich DLR station and Tube Station

For more information about this property,
please call our Woolwich branch on

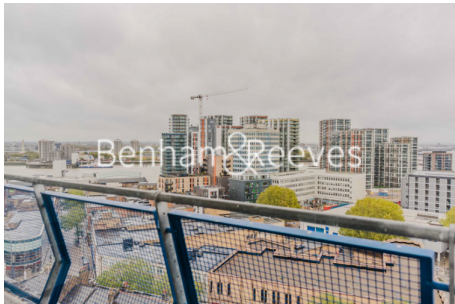
020 8051 0700

Redress & Client Money Protection :

Benham and Reeves are members of The Property Ombudsman redress scheme and have Client Money protection with ARLA Propertymark. You can find more information on our website at <https://www.benhams.com/membership/>



Benham & Reeves

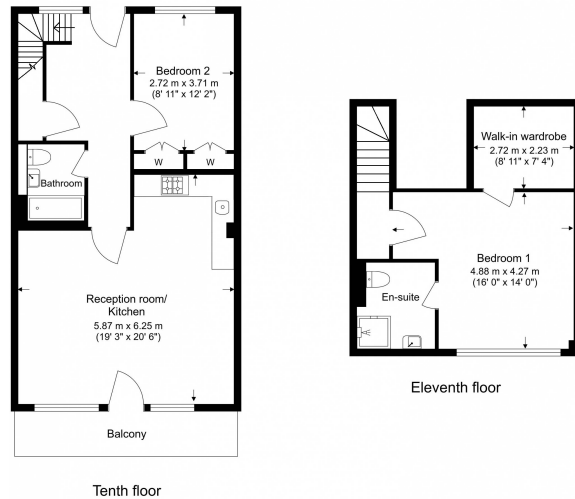


Vista Building, Woolwich High Street, SE18

£542 per week, £2,350 per month + fees

www.benhams.com

Total Gross Internal Area
97.3 Sq/m - 1,048 Sq/ft



Score	Energy rating	Current	Potential
92+	A		
81-91	B		
69-80	C	69 C	78 C
55-68	D		
39-54	E		
21-38	F		
1-20	G		

Benham & Reeves

Floor Plan measurements are approximate and are for illustrative purposes only. While we do not doubt the floor plans accuracy, we make no guarantee, warranty or representation as to the accuracy and completeness of the floor plan.

London branches open six days a week Mon - Sat

Canary Wharf | City | Colindale | Dartmouth Park | Ealing | Fulham
Hammersmith | Hampstead | Highgate | Hyde Park | Kensington | Kew
Knightsbridge | Nine Elms | Shoreditch | Southall | Surrey Quays
Wapping | Wembley | White City | Woolwich

International offices

China | Hong Kong SAR | India | Indonesia | Qatar | Malaysia | Middle East |
Singapore | South Africa | Thailand | Turkey



Benham & Reeves