



Benham & Reeves

John Donne Way, Woolwich, SE10

£531 per week, £2,301 per month + fees

 2 Bedrooms  2 Bathrooms  Furnished

Contemporary furnished 6th floor apartment, with secure eye entry phone system, situated in a well-known development Greenwich. Moments to Greenwich DLR station. EPC B

Please [click here](#) for full detail

Property features

Contemporary furnished 2 bed 2 bath flat located | Open plan kitchen with well-known brand kitchen appliances | Private balcony | Concierge service with CCTV security | Communal roof terrace and private communal courtyard access | EPC-B | On site PURE GYM access and Child Nursery | Close to amenities | Moments to Greenwich DLR station

For more information about this property,
please call our Woolwich branch on

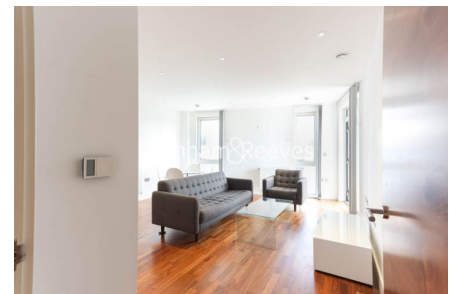
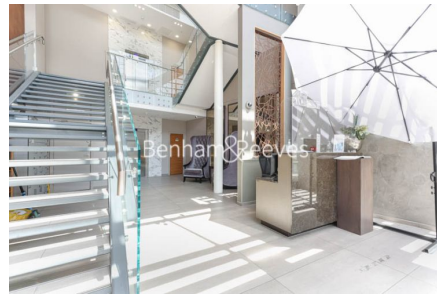
020 8051 0700

Redress & Client Money Protection :

Benham and Reeves are members of The Property Ombudsman redress scheme and have Client Money protection with ARLA Propertymark. You can find more information on our website at <https://www.benhams.com/membership/>



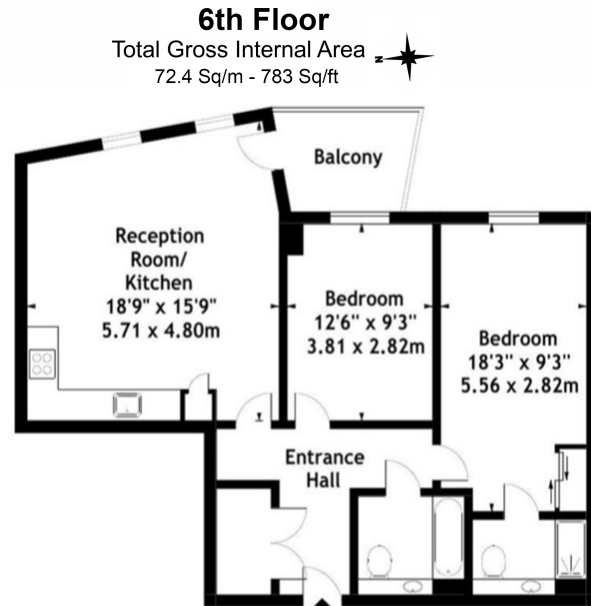
Benham&Reeves



John Donne Way, Woolwich, SE10

£531 per week, £2,301 per month + fees

www.benhams.com



Floor Plan measurements are approximate and are for illustrative purposes only. While we do not doubt the floor plans accuracy, we make no guarantee, warranty or representation as to the accuracy and completeness of the floor plan.

Score	Energy rating	Current	Potential
92+	A		
81-91	B	82 B	82 B
69-80	C		
55-68	D		
39-54	E		
21-38	F		
1-20	G		

London branches open six days a week Mon - Sat

Canary Wharf | City | Colindale | Dartmouth Park | Ealing | Fulham
Hammersmith | Hampstead | Highgate | Hyde Park | Kensington | Kew
Knightsbridge | Nine Elms | Shoreditch | Southall | Surrey Quays
Wapping | Wembley | White City | Woolwich

International offices

China | Hong Kong SAR | India | Indonesia | Qatar | Malaysia | Middle East | Pakistan
Singapore | South Africa | Thailand | Turkey



Benham & Reeves