



Benham & Reeves

## **Cutter Lane, Woolwich, SE10**

£739 per week, £3,202 per month + fees

 2 Bedrooms    2 Bathrooms    Furnished

A luxury contemporarily furnished apartment, with River views and private roof terrace.

Please [click here](#) for full detail

## Property features

**Large private terrace | Residents' swimming pool | Residents' roof terraces | 24 hours concierge | Residents' gym | EPC-B | Floor to ceiling windows | Built in wardrobes | Sauna and various private resident gardens | Moments to Jubilee Line Tube station**

For more information about this property,  
please call our Woolwich branch on

**020 8051 0700**



Redress & Client Money Protection :

Benham and Reeves are members of The Property Ombudsman redress scheme and have Client Money protection with ARLA Propertymark. You can find more information on our website at <https://www.benham.com/membership/>

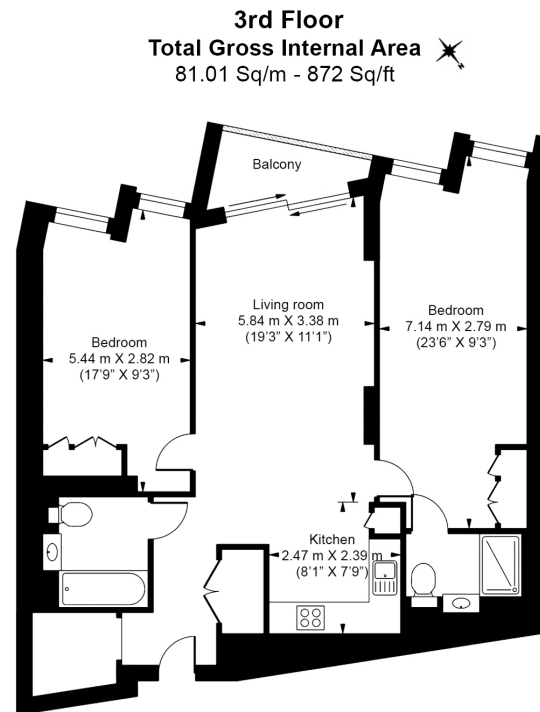
Benham & Reeves



# Cutter Lane, Woolwich, SE10

£739 per week, £3,202 per month + fees

[www.benhams.com](http://www.benhams.com)



Floor Plan measurements are approximate and are for illustrative purposes only. While we do not doubt the floor plans accuracy, we make no guarantee, warranty or representation as to the accuracy and completeness of the floor plan.

## London branches open six days a week Mon - Sat

Canary Wharf | City | Colindale | Dartmouth Park | Ealing | Fulham  
Hammersmith | Hampstead | Highgate | Hyde Park | Kensington | Kew  
Knightsbridge | Nine Elms | Shoreditch | Southall | Surrey Quays  
Wapping | Wembley | White City | Woolwich

## International offices

China | Hong Kong SAR | India | Indonesia | Qatar | Malaysia | Middle East | Pakistan  
Singapore | South Africa | Thailand | Turkey



Benham&Reeves