



Benham & Reeves

Cutter Lane, Woolwich, SE10

£462 per week, £2,002 per month + fees

 1 Bedroom  1 Bathroom 
Furnished/UnFurnished

A luxury apartment with stunning direct River views and exclusive residents' amenities situated in Greenwich Peninsular. A short walk from North Greenwich Underground (Jubilee Line).

Please [click here](#) for full detail

Property features

Brand New Apartment | Bespoke Bathroom | Brightly Lit Reception | Open Plan Kitchen With High - Spec Appliances | Furnished/ Unfurnished | EPC-B | Large Bedroom With Fitted Wardrobe | Wood Floors, Floor To Ceiling Windows & Underfloor Heating | 24 Hr Concierge, Residents Gym, 15th Floor Swimming Pool | Moments From North Greenwich Jubilee Line

For more information about this property,
please call our Woolwich branch on

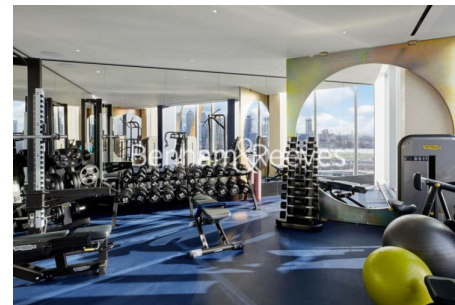
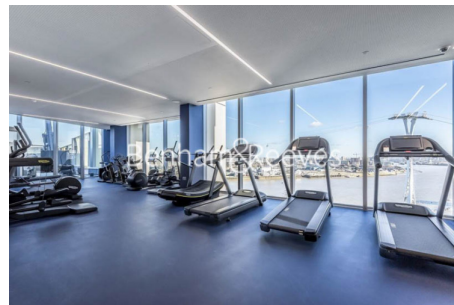
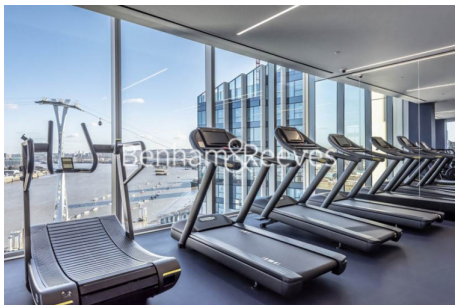
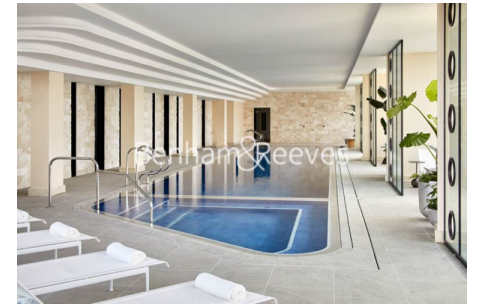
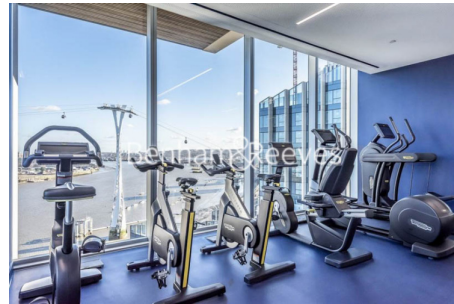
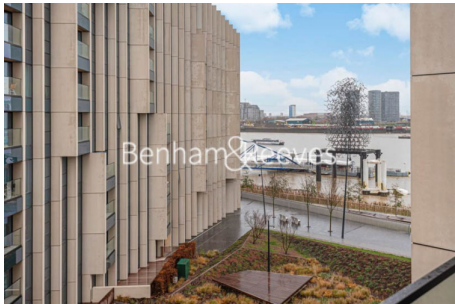
020 8051 0700

Redress & Client Money Protection :

Benham and Reeves are members of The Property Ombudsman redress scheme and have Client Money protection with ARLA Propertymark. You can find more information on our website at <https://www.benhams.com/membership/>



Benham & Reeves

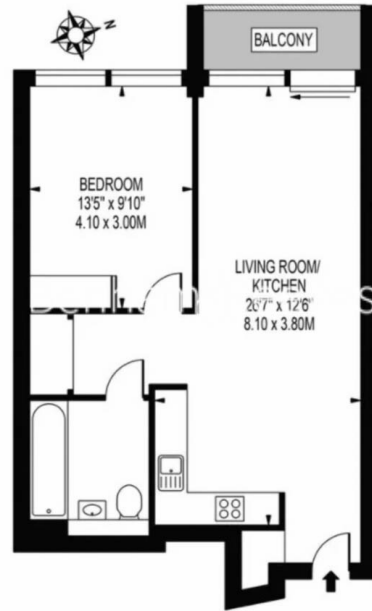


Cutter Lane, Woolwich, SE10

£462 per week, £2,002 per month + fees

www.benhams.com

UPPER RIVERSIDE
APPROXIMATE GROSS INTERNAL FLOOR AREA: 554 SQ FT - 51.47 SQ M



FOR ILLUSTRATION PURPOSES ONLY

Score	Energy rating	Current	Potential
92+	A		
81-91	B	85 B	85 B
69-80	C		
55-68	D		
39-54	E		
21-38	F		
1-20	G		

London branches open six days a week Mon - Sat

Canary Wharf | City | Colindale | Dartmouth Park | Ealing | Fulham
Hammersmith | Hampstead | Highgate | Hyde Park | Kensington | Kew
Knightsbridge | Nine Elms | Shoreditch | Southall | Surrey Quays
Wapping | Wembley | White City | Woolwich

International offices

China | Hong Kong SAR | India | Indonesia | Qatar | Malaysia | Middle East |
Singapore | South Africa | Thailand | Turkey

