



Benham & Reeves

## **Windsor Square, Woolwich, SE18**

£612 per week, £2,652 per month + fees

 2 Bedrooms    2 Bathrooms    Furnished

A BRAND NEW spacious 6th floor apartment with sizable private balcony, set within a popular Royal Arsenal Riverside development, with excellent on-site facilities, in the heart Woolwich. Close to an abundance of nearby travel stations. EPC-B

Please [click here](#) for full detail

## Property features

**2 Double Bedroom Apartment with Built in Wardrobe | Fully Fitted Integrated Kitchen with Well Known Appliances | Reception Room with Dining Area & Floor to Ceiling Windows | Luxurious 2 Bathrooms (1 x En-Suite Shower Rooms) | Area: 900 SqFt / Utility Room / Long Hallway | EPC-B | Resident Swimming Pool, Spa, Gym, Cinema and Lounge | Air Ventilation / Double Glaze Windows | Minutes to Woolwich DLR and Elizabeth Line Cross Rail**

For more information about this property,  
please call our Woolwich branch on

**020 8051 0700**

Redress & Client Money Protection :

Benham and Reeves are members of The Property Ombudsman redress scheme and have Client Money protection with ARLA Propertymark. You can find more information on our website at <https://www.benhams.com/membership/>



Benham & Reeves

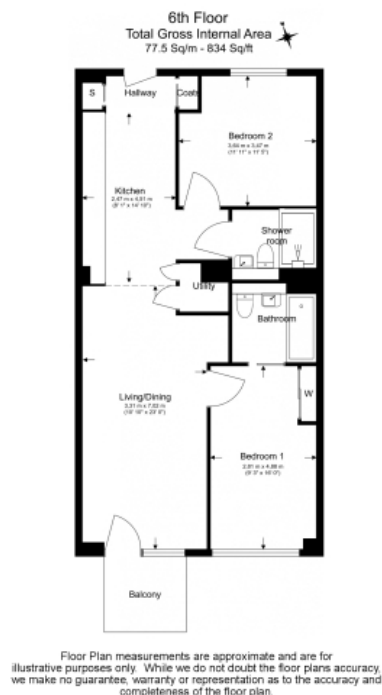




# Windsor Square, Woolwich, SE18

£612 per week, £2,652 per month + fees

www.benhams.com



Score	Energy rating	Current	Potential
92+	A		
81-91	B	86   B	86   B
69-80	C		
55-68	D		
39-54	E		
21-38	F		
1-20	G		

## London branches open six days a week Mon - Sat

Canary Wharf | City | Colindale | Dartmouth Park | Ealing | Fulham  
Hammersmith | Hampstead | Highgate | Hyde Park | Kensington | Kew  
Knightsbridge | Nine Elms | Shoreditch | Southall | Surrey Quays  
Wapping | Wembley | White City | Woolwich

## International offices

China | Hong Kong SAR | India | Indonesia | Qatar | Malaysia | Middle East | Pakistan  
Singapore | South Africa | Thailand | Turkey



Benham & Reeves