



Benham & Reeves

Brunwell Avenue, Woolwich, SE18

£508 per week, £2,200 per month + fees

🛏️ 2 Bedrooms 🚿 2 Bathrooms 🛋️ Unfurnished

Contemporary, furnished 2nd floor apartment situated in a modern development, moments from Woolwich DLR and town centre. EPC B

Please [click here](#) for full detail

Property features

Furnished | Open plan kitchen with integrated kitchen appliances | Private Balcony | Concierge service | Close to amenities | EPC-B | 2 bed 2 bath located on the 2nd floor | 24 hours security | Moments to DLR and Cross rail station

For more information about this property,
please call our Woolwich branch on

020 8051 0700

Redress & Client Money Protection :

Benham and Reeves are members of The Property Ombudsman redress scheme and have Client Money protection with ARLA Propertymark. You can find more information on our website at <https://www.benhams.com/membership/>



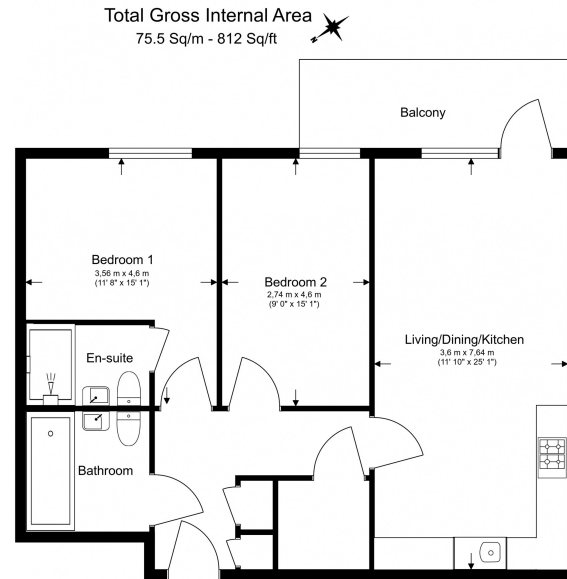
Benham & Reeves



Brunwell Avenue, Woolwich, SE18

£508 per week, £2,200 per month + fees

www.benhams.com



Floor Plan measurements are approximate and are for illustrative purposes only. While we do not doubt the floor plans accuracy, we make no guarantee, warranty or representation as to the accuracy and completeness of the floor plan.

Score	Energy rating	Current	Potential
92+	A		
81-91	B	85 B	85 B
69-80	C		
55-68	D		
39-54	E		
21-38	F		
1-20	G		

London branches open six days a week Mon - Sat

Canary Wharf | City | Colindale | Dartmouth Park | Ealing | Fulham
Hammersmith | Hampstead | Highgate | Hyde Park | Kensington | Kew
Knightsbridge | Nine Elms | Shoreditch | Southall | Surrey Quays
Wapping | Wembley | White City | Woolwich

International offices

China | Hong Kong SAR | India | Indonesia | Qatar | Malaysia | Middle East | Pakistan
Singapore | South Africa | Thailand | Turkey



Benham & Reeves