



Benham & Reeves

Duke Of Wellington Avenue, Woolwich, SE18

£462 per week, £2,002 per month + fees

🛏 1 Bedroom 🚿 1 Bathroom 🛋 Furnished

Immaculate contemporary 5th floor furnished apartment with direct River views, situated within the heart of Woolwich. The property is moments away from the Woolwich DLR station and Woolwich Cross-Rail. Parking included on separated negotiation. EPC-B

Please [click here](#) for full detail

Property features

Contemporary Furnished 1 Bed 1 Bath Set On The 5th Floor | Overall Spans Out 600 Sqft With Private Balcony Overlooking | Open plan kitchen with integrated kitchen appliances | Ample storage with large wardrobe | 24 hours CCTV security with concierge service | EPC-B | Fully Furnished | Resident Gymnasium, Pool, Spa, Sauna, Steam Room And Cinema | Moments to Elizabeth line and DLR station

For more information about this property,
please call our Woolwich branch on

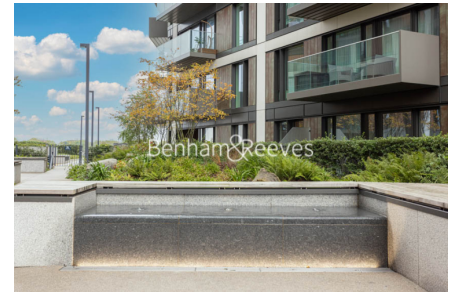
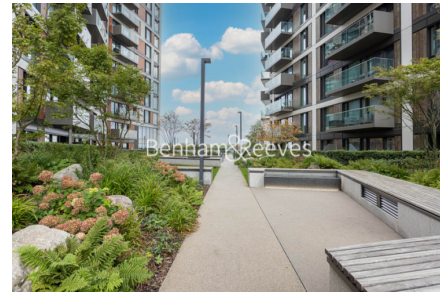
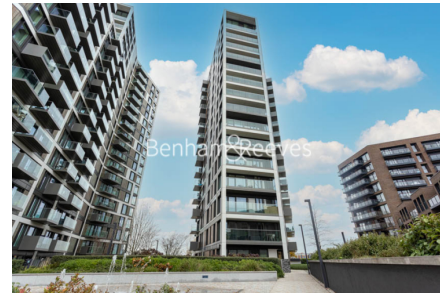
020 8051 0700

Redress & Client Money Protection :

Benham and Reeves are members of The Property Ombudsman redress scheme and have Client Money protection with ARLA Propertymark. You can find more information on our website at <https://www.benhams.com/membership/>



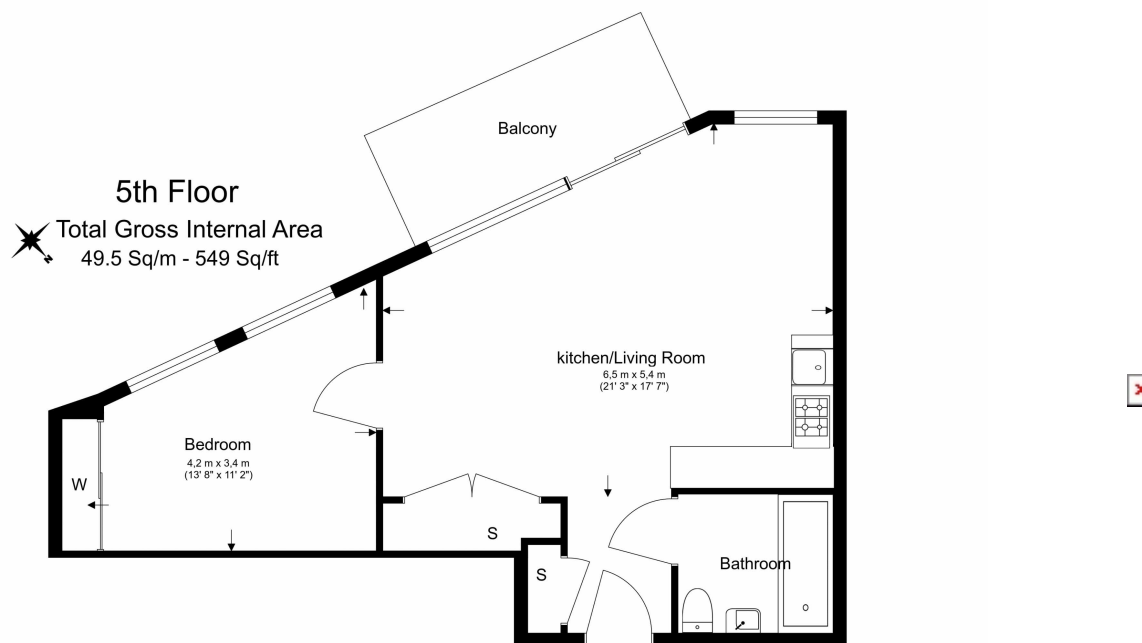
Benham&Reeves



Duke Of Wellington Avenue, Woolwich, SE18

£462 per week, £2,002 per month + fees

www.benhams.com



Floor Plan measurements are approximate and are for illustrative purposes only. While we do not doubt the floor plans accuracy, we make no guarantee, warranty or representation as to the accuracy and completeness of the floor plan.

London branches open six days a week Mon - Sat

Canary Wharf | City | Colindale | Dartmouth Park | Ealing | Fulham
Hammersmith | Hampstead | Highgate | Hyde Park | Kensington | Kew
Knightsbridge | Nine Elms | Shoreditch | Southall | Surrey Quays
Wapping | Wembley | White City | Woolwich

International offices

China | Hong Kong SAR | India | Indonesia | Qatar | Malaysia | Middle East |
Singapore | South Africa | Thailand | Turkey



Benham & Reeves