



Benham & Reeves

Thunderer Walk, Woolwich, SE18

£462 per week, £2,002 per month + fees

🛏 Studio 🚿 1 Bathroom 🛋 Furnished

An immaculate studio apartment, furnished by an interior designer company, situated in a sought-after development with superb resident's facilities, close to the amenities of Woolwich. Within walking distance from Woolwich Arsenal DLR and BR Station.

Please [click here](#) for full detail

Property features

Brand new apartment | Studio apartment | Furnished | Balcony | 24hr concierge | EPC-B | 24hr residents gym | Swimming pool, sauna, steam room | Cinema room | Woolwich Arsenal DLR and BR Station

For more information about this property,
please call our Property Management branch on

020 7319 9740

Redress & Client Money Protection :

Benham and Reeves are members of The Property Ombudsman redress scheme and have Client Money protection with ARLA Propertymark. You can find more information on our website at <https://www.benhams.com/membership/>



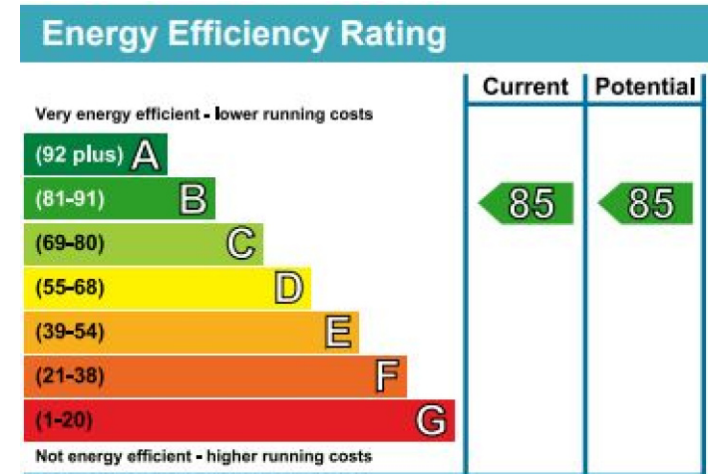
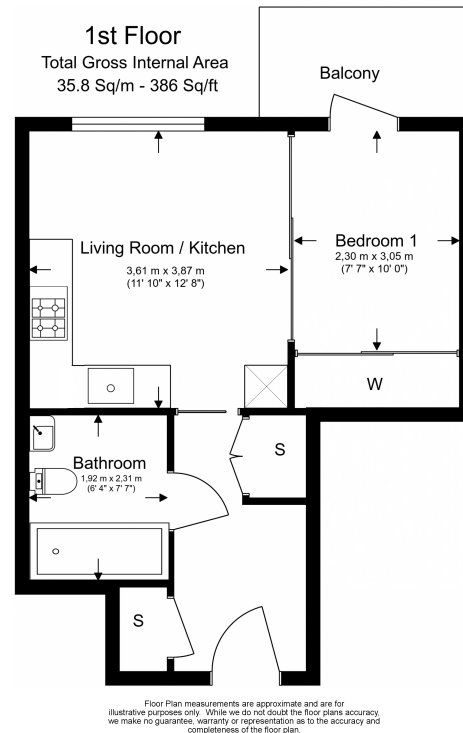
Benham&Reeves



Thunderer Walk, Woolwich, SE18

£462 per week, £2,002 per month + fees

www.benhams.com



London branches open six days a week Mon - Sat

Canary Wharf | City | Colindale | Dartmouth Park | Ealing | Fulham
Hammersmith | Hampstead | Highgate | Hyde Park | Kensington | Kew
Knightsbridge | Nine Elms | Shoreditch | Southall | Surrey Quays
Wapping | Wembley | White City | Woolwich

International offices

China | Hong Kong SAR | India | Indonesia | Qatar | Malaysia | Middle East |
Singapore | South Africa | Thailand | Turkey



Benham & Reeves