



Benham & Reeves

Artillery Place, Woolwich, SE18

£369 per week, £1,599 per month + fees

🛏 1 Bedroom 🚿 1 Bathroom 🛋 Furnished

Contemporary furnished 2nd floor apartment with good connections to public transport, including Woolwich Town and Elizabeth Station. EPC B

Please [click here](#) for full detail

Property features

2 nd floor furnished 1 bed 1 bath | Open plan kitchen with well known kitchen appliances | Ample storage with large wardrobe and storage room | Carpet throughout the flat and tiles in the kitchen and bath | Large south facing balcony | EPC-B | Concierge | Close to amenities | 10 minutes walk to Woolwich tube station

For more information about this property,
please call our Woolwich branch on

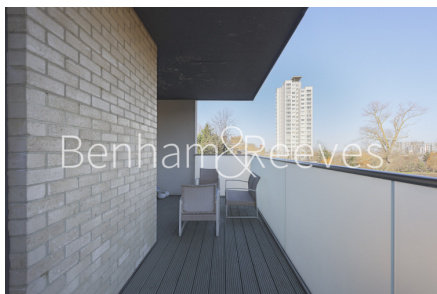
020 8051 0700

Redress & Client Money Protection :

Benham and Reeves are members of The Property Ombudsman redress scheme and have Client Money protection with ARLA Propertymark. You can find more information on our website at <https://www.benhamandreeves.com/membership/>



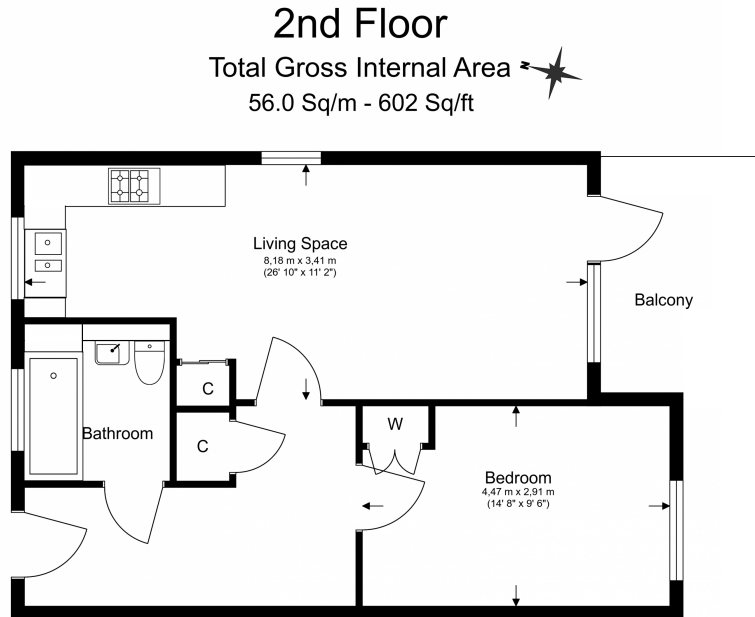
Benham&Reeves



Artillery Place, Woolwich, SE18

£369 per week, £1,599 per month + fees

www.benhams.com



Floor Plan measurements are approximate and are for illustrative purposes only. While we do not doubt the floor plans accuracy, we make no guarantee, warranty or representation as to the accuracy and completeness of the floor plan.

| Score | Energy rating | Current | Potential |
|-------|---------------|---------|-----------|
| 92+ | A | | |
| 81-91 | B | 85 B | 85 B |
| 69-80 | C | | |
| 55-68 | D | | |
| 39-54 | E | | |
| 21-38 | F | | |
| 1-20 | G | | |

London branches open six days a week Mon - Sat

Canary Wharf | City | Colindale | Dartmouth Park | Ealing | Fulham
Hammersmith | Hampstead | Highgate | Hyde Park | Kensington | Kew
Knightsbridge | Nine Elms | Shoreditch | Southall | Surrey Quays
Wapping | Wembley | White City | Woolwich

International offices

China | Hong Kong SAR | India | Indonesia | Qatar | Malaysia | Middle East |
Singapore | South Africa | Thailand | Turkey



Benham & Reeves