



Benham & Reeves

**Trinity Walk, Woolwich, SE18**

£508 per week, £2,200 per month + fees

 2 Bedrooms    2 Bathrooms    Furnished

Contemporary, furnished ground floor apartment situated in a modern development, moments from Woolwich DLR and town centre. EPC B

Please [click here](#) for full detail

## Property features

**2 Bedroom | 2 bathroom | Private Balcony | Concierge service | Close to amenities | EPC- B | Furnished | Open plan kitchen with integrated kitchen appliances | 1100 sqft | Moments to DLR and Cross rail Woolwich tube station**

For more information about this property,  
please call our Woolwich branch on

**020 8051 0700**

Redress & Client Money Protection :

Benham and Reeves are members of The Property Ombudsman redress scheme and have Client Money protection with ARLA Propertymark. You can find more information on our website at <https://www.benhams.com/membership/>



Benham & Reeves

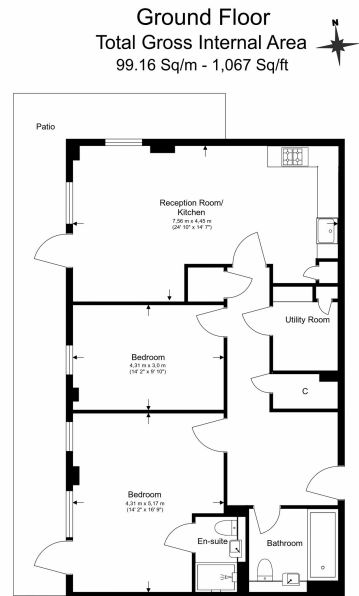




# Trinity Walk, Woolwich, SE18

£508 per week, £2,200 per month + fees

www.benhams.com



Floor Plan measurements are approximate and are for illustrative purposes only. While we do not doubt the floor plans accuracy, we make no guarantee, warranty or representation as to the accuracy and completeness of the floor plan.

Score	Energy rating	Current	Potential
92+	A		
81-91	B	82 B	82 B
69-80	C		
55-68	D		
39-54	E		
21-38	F		
1-20	G		

## London branches open six days a week Mon - Sat

Canary Wharf | City | Colindale | Dartmouth Park | Ealing | Fulham  
Hammersmith | Hampstead | Highgate | Hyde Park | Kensington | Kew  
Knightsbridge | Nine Elms | Shoreditch | Southall | Surrey Quays  
Wapping | Wembley | White City | Woolwich

## International offices

China | Hong Kong SAR | India | Indonesia | Qatar | Malaysia | Middle East | Pakistan  
Singapore | South Africa | Thailand | Turkey



Benham & Reeves