



Benham & Reeves

Royal Arsenal Riverside, Woolwich, SE18

£577 per week, £2,500 per month + fees

 2 Bedrooms  2 Bathrooms  Furnished

A modern apartment with River views set in a sought-after riverside development, in Woolwich Arsenal. Located less than a three-minute walk from Woolwich Arsenal DLR and Woolwich tube station. EPC B

Please [click here](#) for full detail

Property features

Furnished 2 bed 2 bath flat located on the second floor | Open plan kitchen with well known kitchen appliances | Private balcony with river view | 24 hours concierge with gym facilities | Close to amenities | EPC- B | Fully fitted kitchen | Moments to woolwich tube station | Close to woolwich DLR station and national rail station

For more information about this property,
please call our Woolwich branch on

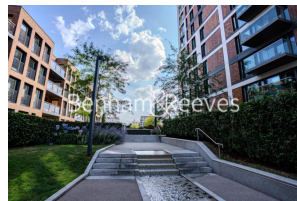
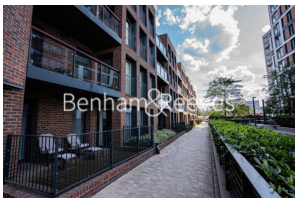
020 8051 0700

Redress & Client Money Protection :

Benham and Reeves are members of The Property Ombudsman redress scheme and have Client Money protection with ARLA Propertymark. You can find more information on our website at <https://www.benham.com/membership/>



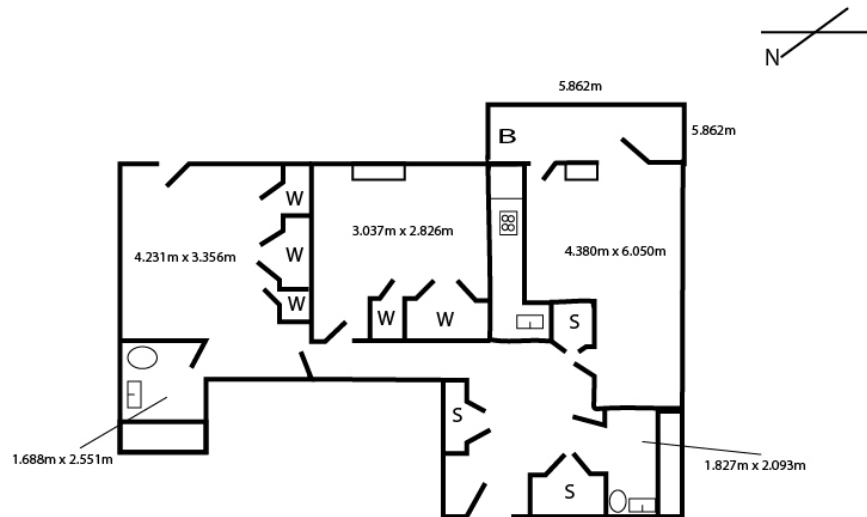
Benham&Reeves



Royal Arsenal Riverside, Woolwich, SE18

£577 per week, £2,500 per month + fees

www.benhams.com



Score	Energy rating	Current	Potential
92+	A		
81-91	B	87 B	87 B
69-80	C		
55-68	D		
39-54	E		
21-38	F		
1-20	G		

London branches open six days a week Mon - Sat

Canary Wharf | City | Colindale | Dartmouth Park | Ealing | Fulham
Hammersmith | Hampstead | Highgate | Hyde Park | Kensington | Kew
Knightsbridge | Nine Elms | Shoreditch | Southall | Surrey Quays
Wapping | Wembley | White City | Woolwich

International offices

China | Hong Kong SAR | India | Indonesia | Qatar | Malaysia | Middle East | Pakistan
Singapore | South Africa | Thailand | Turkey

