



Benham & Reeves

Wernbrook Street, Woolwich, SE18

£646 per week, £2,800 per month + fees

 3 Bedrooms  1 Bathroom  Unfurnished

Newly redecorated Victorian Terrace House 3 beds 1 bath situated in the sought after Plumstead Common Conservation Area offers an inviting blend of historic character and practical modern living. EPC C

Please [click here](#) for full detail

Property features

Recent redecorated 3 bed 1 bath terrace house | New kitchen with new kitchen appliances | Private garden | Unfurnished | On street parking with parking permit | EPC-C | Close to amenities | Close to Plumstead Common | Proximity to several local schools | 5 mins bus trip to Woolwich tube Station

For more information about this property,
please call our Woolwich branch on

020 8051 0700

Redress & Client Money Protection :

Benham and Reeves are members of The Property Ombudsman redress scheme and have Client Money protection with ARLA Propertymark. You can find more information on our website at <https://www.benhams.com/membership/>



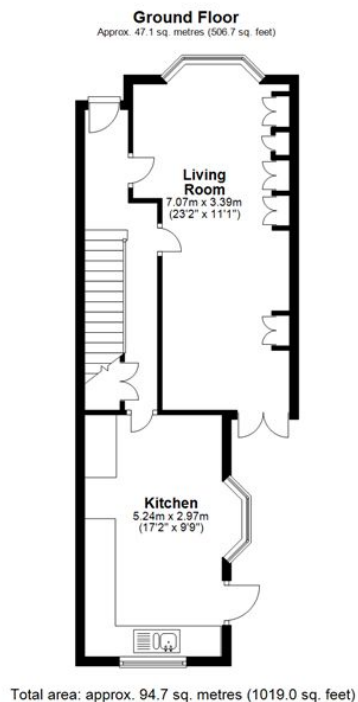
Benham & Reeves



Wernbrook Street, Woolwich, SE18

£646 per week, £2,800 per month + fees

www.benhams.com



Score	Energy rating	Current	Potential
92+	A		
81-91	B		
69-80	C	69 C	79 C
55-68	D		
39-54	E		
21-38	F		
1-20	G		

London branches open six days a week Mon - Sat

Canary Wharf | City | Colindale | Dartmouth Park | Ealing | Fulham
Hammersmith | Hampstead | Highgate | Hyde Park | Kensington | Kew
Knightsbridge | Nine Elms | Shoreditch | Southall | Surrey Quays
Wapping | Wembley | White City | Woolwich

International offices

China | Hong Kong SAR | India | Indonesia | Qatar | Malaysia | Middle East |
Singapore | South Africa | Thailand | Turkey



Benham & Reeves