



Benham & Reeves

Erebus Drive, Woolwich, SE18

£485 per week, £2,102 per month + fees

 2 Bedrooms  2 Bathrooms  Furnished

Contemporary furnished 2nd floor apartment , with private parking bay, situated moments from Woolwich DLR station and The Elizabeth Line, Concierge service and parking included. Utility bills included

Please [click here](#) for full detail

Property features

Contemporary furnished 2 bed 2 bath located on the 2nd floor | Open plan kitchen with integrated kitchen appliances | Private balcony with river view | Ample storage area with large wardrobes in the bedrooms | Concierge service and lift access | EPC-B | Dual Aspect With Large Windows | Parking Included | Moments to Elizabeth Line and Woolwich DRL station

For more information about this property,
please call our Woolwich branch on

020 8051 0700

Redress & Client Money Protection :

Benham and Reeves are members of The Property Ombudsman redress scheme and have Client Money protection with ARLA Propertymark. You can find more information on our website at <https://www.benhamandreeves.com/membership/>



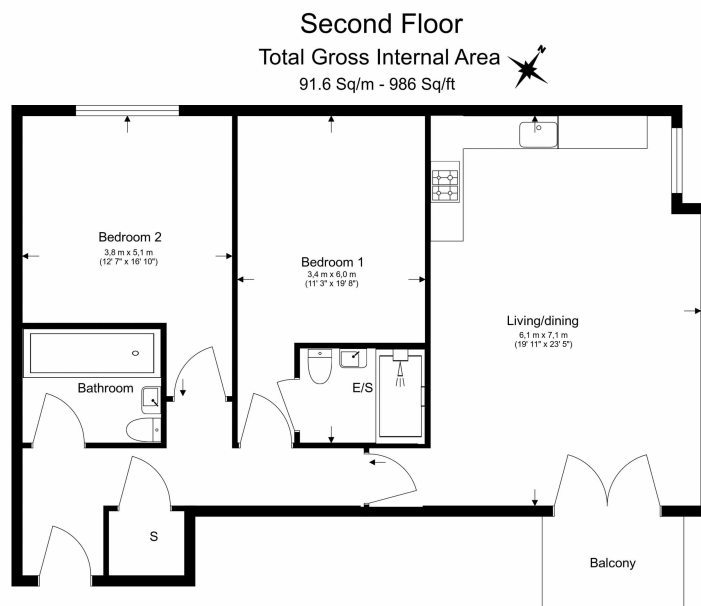
Benham&Reeves



Erebus Drive, Woolwich, SE18

£485 per week, £2,102 per month + fees

www.benhams.com



Floor Plan measurements are approximate and are for illustrative purposes only. While we do not doubt the floor plans accuracy, we make no guarantee, warranty or representation as to the accuracy and completeness of the floor plan.

Score	Energy rating	Current	Potential
92+	A		
81-91	B	83 B	83 B
69-80	C		
55-68	D		
39-54	E		
21-38	F		
1-20	G		

London branches open six days a week Mon - Sat

Canary Wharf | City | Colindale | Dartmouth Park | Ealing | Fulham
Hammersmith | Hampstead | Highgate | Hyde Park | Kensington | Kew
Knightsbridge | Nine Elms | Shoreditch | Southall | Surrey Quays
Wapping | Wembley | White City | Woolwich

International offices

China | Hong Kong SAR | India | Israel | Malaysia | Middle East | Pakistan
Qatar | Singapore | South Africa | Thailand | Turkey



Benham & Reeves