



Benham & Reeves

Tideslea Path, Woolwich, SE28

£415 per week, £1,800 per month + fees

🛏️ 2 Bedrooms 🚿 2 Bathrooms 🛋️ Unfurnished

Spacious 3rd Floor ,Part Furnished Apartment. Located in the heart of West Thamesmead. With easy access to Plumstead and Woolwich Station.

Please [click here](#) for full detail

Property features

2 bed 2 bath part furnished flat located on the 3rd floor | Bright and spacious flat | Wooden flooring throughout the flat | Ample storage | Two double bedrooms | EPC-B | Close to Amenities | Open plan kitchen/lounge area | Close to bus stop and easy access to Woolwich tube station

For more information about this property,
please call our Woolwich branch on

020 8051 0700

Redress & Client Money Protection :

Benham and Reeves are members of The Property Ombudsman redress scheme and have Client Money protection with ARLA Propertymark. You can find more information on our website at <https://www.benhamandreeves.com/membership/>



Benham & Reeves

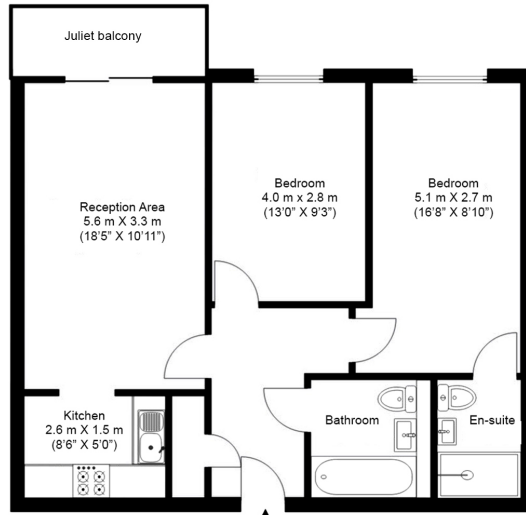


Tideslea Path, Woolwich, SE28

£415 per week, £1,800 per month + fees

www.benhams.com

Third Floor
Total Gross Internal Area
63.5 Sq/m - 684 Sq/ft



Floor Plan measurements are approximate and are for illustrative purposes only. While we do not doubt the floor plans accuracy, we make no guarantee, warranty or representation as to the accuracy and completeness of the floor plan.

Score	Energy rating	Current	Potential
92+	A		
81-91	B	82 B	82 B
69-80	C		
55-68	D		
39-54	E		
21-38	F		
1-20	G		

London branches open six days a week Mon - Sat

Canary Wharf | City | Colindale | Dartmouth Park | Ealing | Fulham
Hammersmith | Hampstead | Highgate | Hyde Park | Kensington | Kew
Knightsbridge | Nine Elms | Shoreditch | Southall | Surrey Quays
Wapping | Wembley | White City | Woolwich

International offices

China | Hong Kong SAR | India | Indonesia | Qatar | Malaysia | Middle East | Pakistan
Singapore | South Africa | Thailand | Turkey



Benham & Reeves