



Benham & Reeves

Erebus Drive, Woolwich, SE28

£438 per week, £1,898 per month + fees

 2 Bedrooms  2 Bathrooms  Unfurnished

Bright, stylish 6th floor apartment with secure underground parking and private terrace with beautiful direct River views. For excellent transport links, Woolwich Arsenal Station is a short walk away.

Please [click here](#) for full detail

Property features

Modern development with Concierge | 6th floor flat with parking on separate negotiation | Private balcony with river views | Ensuite bathroom and additional family bathroom | Close up kitchen area with good size reception area | EPC-B | Spacious And Bright | Include Gas Central Heating | On Site Concierge | Close to Woolwich Railway, DLR and Thames Clipper

For more information about this property,
please call our Woolwich branch on

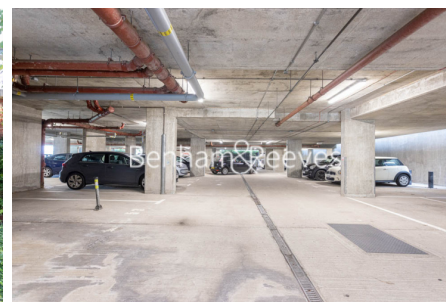
020 8051 0700

Redress & Client Money Protection :

Benham and Reeves are members of The Property Ombudsman redress scheme and have Client Money protection with ARLA Propertymark. You can find more information on our website at <https://www.benhamandreeves.com/membership/>



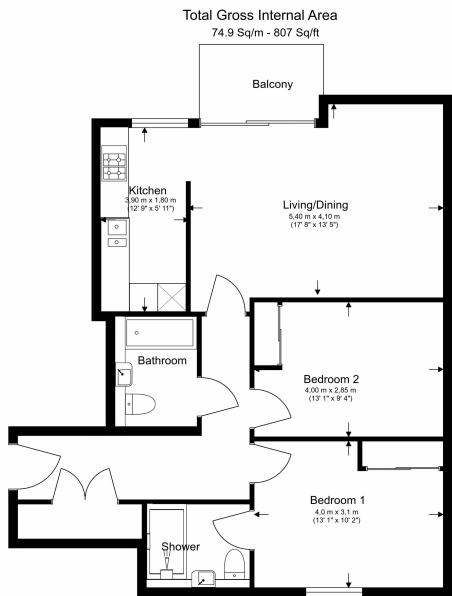
Benham & Reeves



Erebus Drive, Woolwich, SE28

£438 per week, £1,898 per month + fees

www.benhams.com



Score	Energy rating	Current	Potential
92+	A		
81-91	B	81 B	82 B
69-80	C		
55-68	D		
39-54	E		
21-38	F		
1-20	G		

London branches open six days a week Mon - Sat

Canary Wharf | City | Colindale | Dartmouth Park | Ealing | Fulham
Hammersmith | Hampstead | Highgate | Hyde Park | Kensington | Kew
Knightsbridge | Nine Elms | Shoreditch | Southall | Surrey Quays
Wapping | Wembley | White City | Woolwich

International offices

China | Hong Kong SAR | India | Indonesia | Qatar | Malaysia | Middle East |
Singapore | South Africa | Thailand | Turkey

