



Benham & Reeves

## **Principal Tower, Worship Street, EC2A**

£808 per week, £3,500 per month + fees

 1 Bedroom    1 Bathroom    Furnished

Stunning 33rd floor apartment with breathtaking views of the City situated within London's most iconic residential development, with State of the art facilities, on the fringes of the City and Shoreditch.

Please [click here](#) for full detail

## Property features

**1 bedroom apartment | Bespoke bathroom | Open Plan Reception | Kitchen integrated with Miele appliances | Furnished | EPC-B | Dedicated 24-hour Concierge, swimming pool, sauna, spa, gym | Excellent Transport links Nearby | Nearby Walking distance from Shoreditch**

For more information about this property,  
please call our City branch on

**020 7213 9700**

Redress & Client Money Protection :

Benham and Reeves are members of The Property Ombudsman redress scheme and have Client Money protection with ARLA Propertymark. You can find more information on our website at <https://www.benhams.com/membership/>



**Benham & Reeves**

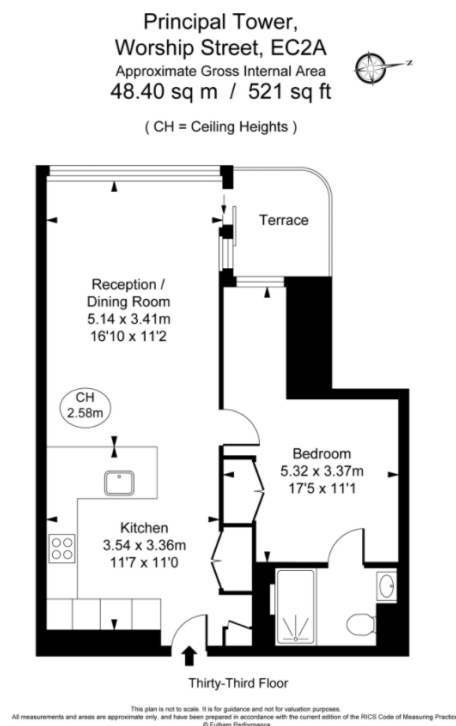




# Principal Tower, Worship Street, EC2A

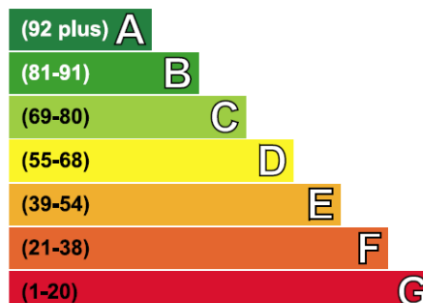
£808 per week, £3,500 per month + fees

www.benhams.com



## Energy Efficiency Rating

Very energy efficient - lower running costs



Not energy efficient - higher running costs

Current	Potential
85	85

## London branches open six days a week Mon - Sat

Canary Wharf | City | Colindale | Dartmouth Park | Ealing | Fulham  
Hammersmith | Hampstead | Highgate | Hyde Park | Kensington | Kew  
Knightsbridge | Nine Elms | Shoreditch | Southall | Surrey Quays  
Wapping | Wembley | White City | Woolwich

## International offices

China | Hong Kong SAR | India | Indonesia | Qatar | Malaysia | Middle East | Pakistan  
Singapore | South Africa | Thailand | Turkey



Benham & Reeves